



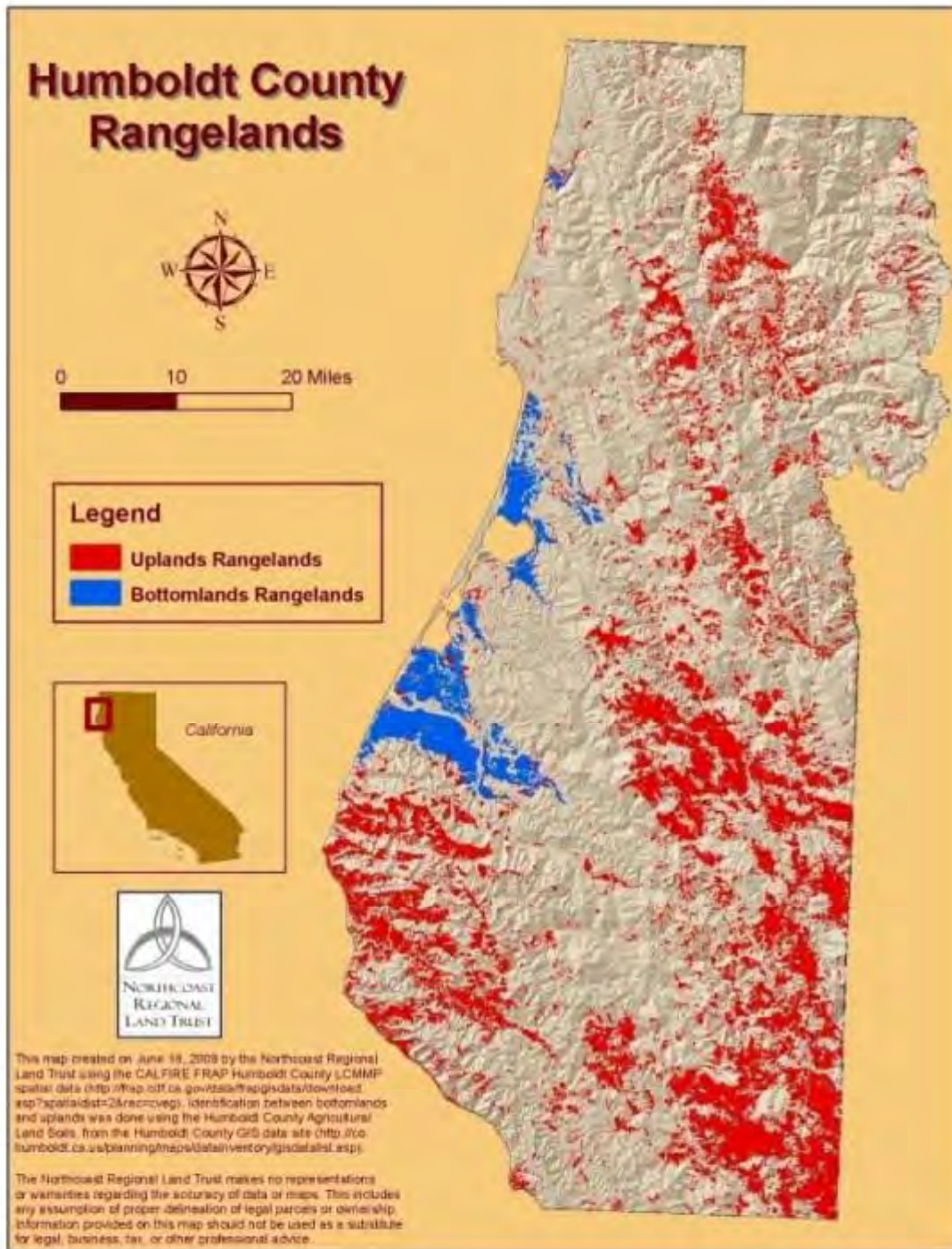
HUMBOLDT COUNTY RANGELANDS

Analysis conducted by Northcoast Regional Land Trust.

Questions Asked

- What is the productive of capacity of rangelands for beef, dairy and produce?
- How do revenues relate to the cost of land for purchase or lease?
- Are local producers planning for succession?
- How do regulations affect Ag lands?
- What is the impact of public acquisitions on bottomlands productivity?
- What could sea level rise mean for bottomlands?

Existing Rangelands



487,000 acres

Includes:

- 12% in bottomlands (60,000)
- 88% in uplands (427,000)
- 86% private (419,000)
- 14% public (68,000)

North Coast Dialogues

Rangelands Analysis

Uplands Rangelands

427,000 acres

- 85% is privately owned
- Supports approximately 1 cow/30 acres (or 0.03 cows/acre)
- Total carrying capacity = approx 14,000 head in uplands

North Coast Dialogues

Rangelands Analysis

Bottomlands Rangelands

60,000 acres

- 92% is privately owned
- Supports approximately
1 cow/acre
- Total carrying capacity =
60,000 head in bottomlands

North Coast Dialogues

Rangelands Analysis

Productive Capacity for Beef and Dairy

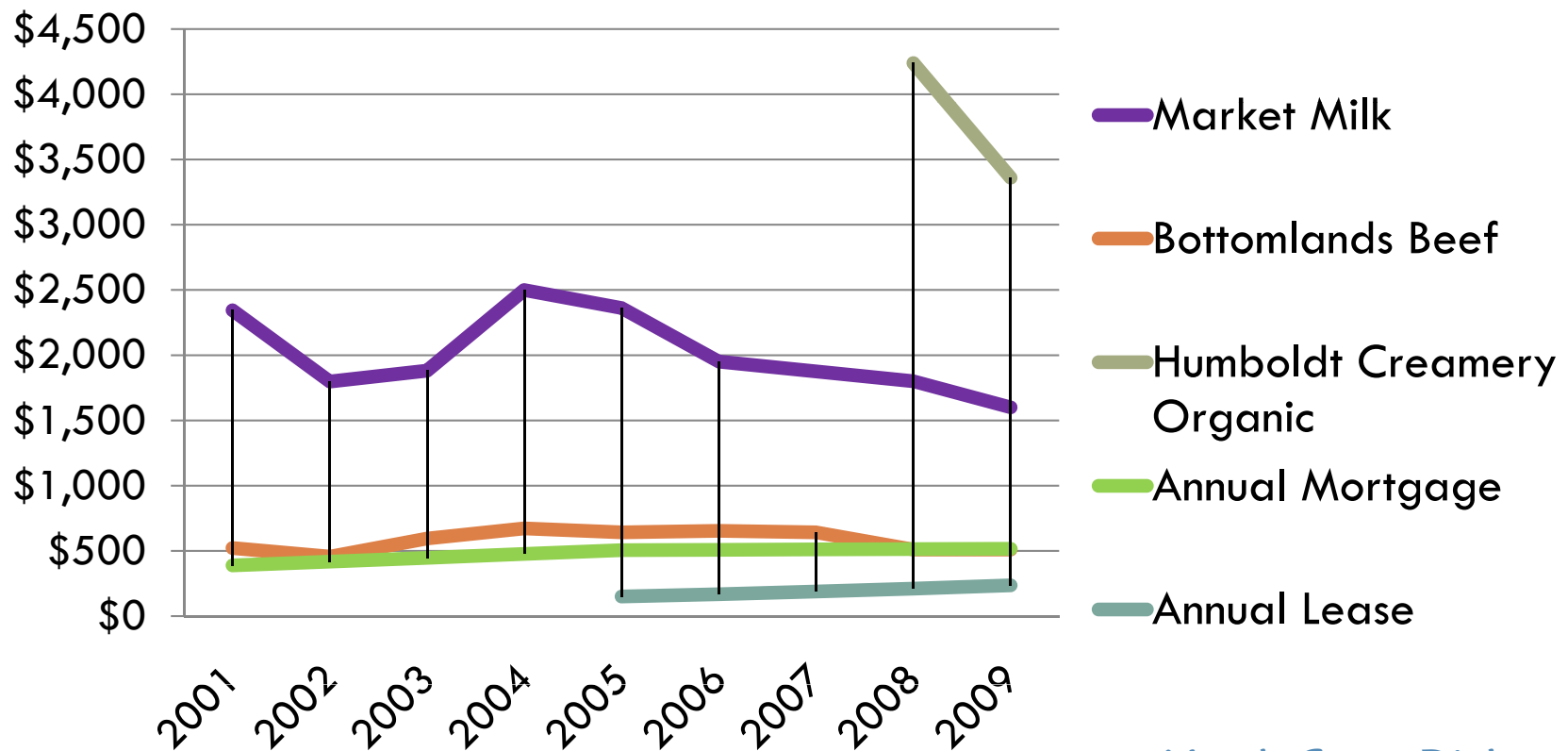
- Capacity of Uplands = 14,000 head **19%**
(thirty acres/cow)
- Capacity of Bottomlands = 60,000 head **81%**
(one acre/cow)
- Total Capacity = 74,000 head

NOTE: 81% of the carrying capacity exists on 12% of the rangelands.

NOTE: Historic Average (10-yr) = 50,000 head (67% of capacity)

Threats to Rangeland Productivity

Per Acre Gross Revenue Generation vs. Price of Land in Bottomlands



Other Threats to Rangeland Productivity

- **No heir to continue their Ag operations**

37% of dairy producers, 27% of beef cattle producers, 65% of farmers

- **No estate plan to protect their land**

65% of producers do not have an estate plan in place.

- **May sell their land within 15 years**

42% of dairy producers, 25% of beef cattle producers, 36% of farmers

- **Regulations**

50% of producers agree that regulations have forced them to consider selling their land or retiring.

73% agree that regulations limit their ability to make business and land improvements to their Ag operations.

Private Bottomlands

55,000 acres (92% of total bottomlands)

- 63% exists in ownerships smaller than 160 acres.
- 7% exists in ownerships larger than 600 acres.
- Carrying Capacity =
55,000 head



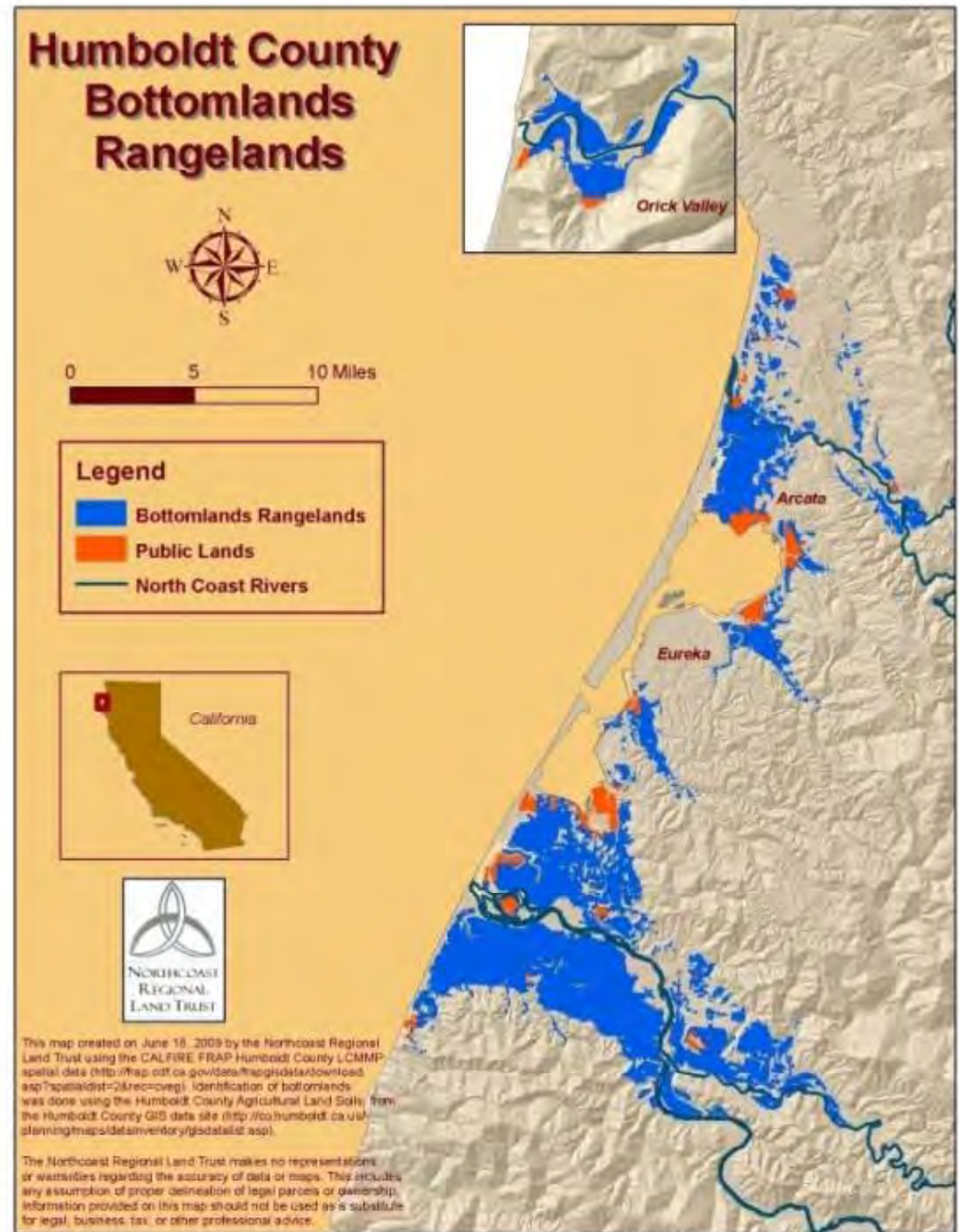
North Coast Dialogues

Rangelands Analysis

Public Bottomlands

4,958 acres

- 41% is State owned.
- 29% is Federally owned.
- 17% is City owned.
- Carrying Capacity = 4,958 head



North Coast Dialogues

Rangelands Analysis

Public Bottomlands

4,958 acres

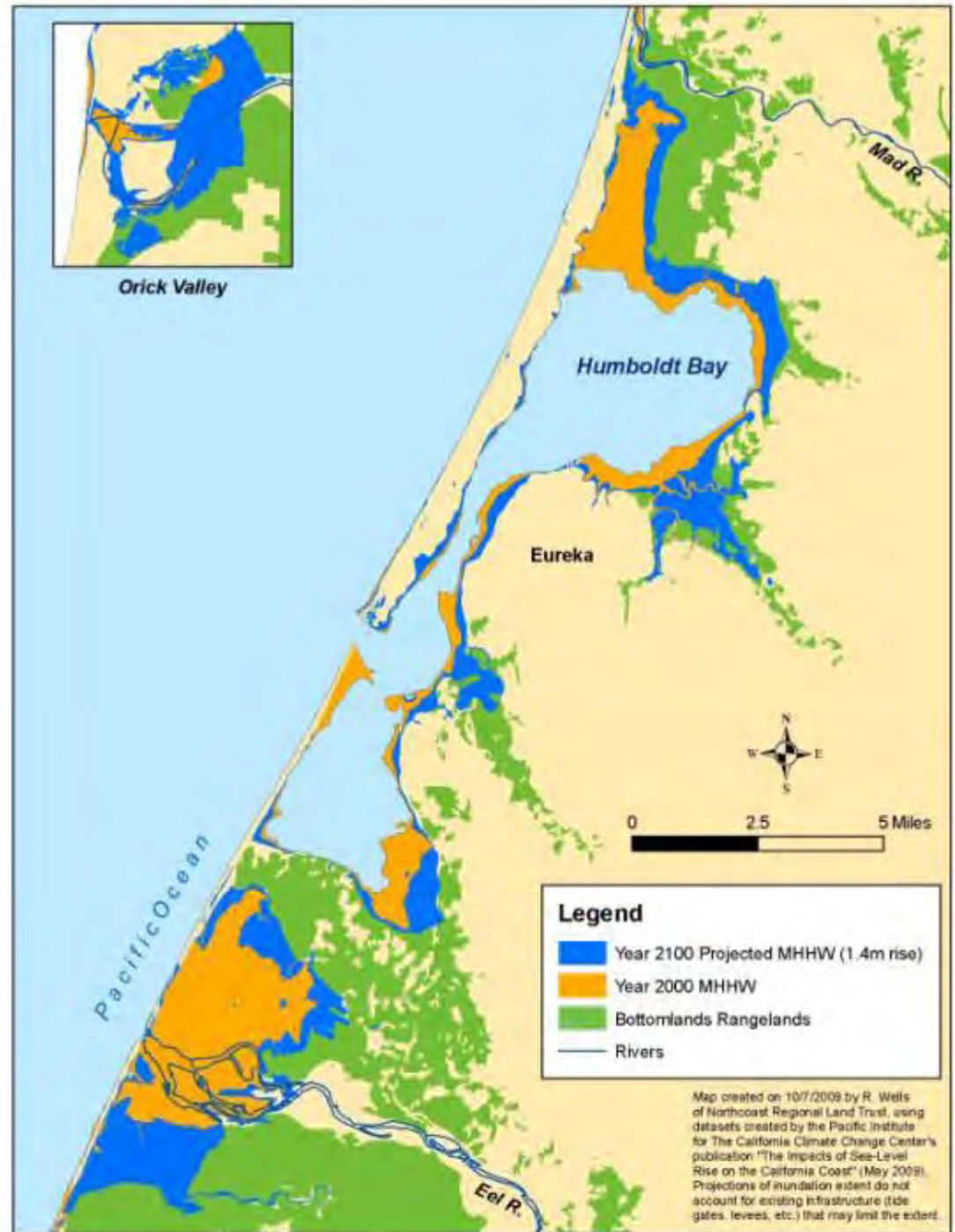
Public ownership represents 8% of the Bottomlands carrying capacity. Production has been decreased by 47% on those lands which could have generated approximately \$1.2 million in annual revenue.

	<u>Total acres</u>	<u>Acres Out of Production*</u>
<u>State</u>	2,031	1 320
<u>Federal</u>	1,457	300
<u>City</u>	819	107
<u>County</u>	531	531
<u>Tribal</u>	120	120
TOTAL:	4,958	2,378

*Approximation based on best data available

Projected Sea Level Rise

Note: projections do not account for existing infrastructure such as levee systems.



North Coast Dialogues

Rangelands Analysis