

AUTUMN 2014

# NORTHCOAST REGIONAL LAND TRUST



*The Bottoms*

*Stock Schlueter*

## Private Landowners Help to Expand Port Orford Cedar Reserve

The Northcoast Regional Land Trust (NRLT) is currently working with three private landowners to expand a Port Orford cedar reserve area near Willow Creek, CA. Located in the upper Summit and Panther Creek drainages within the Trinity River watershed, the proposed project would establish conservation easements across 409 forested acres. The project will protect working forestlands, water quality, Pacific fisher habitat, and globally significant stands of Port Orford cedar occurring at the interface of the North Coast Ranges and the Klamath Mountains. Notably, the easement properties adjoin the 1600 acre Miller Forest reserve, a tract that the Miller Trust and NRLT helped protect with support from the Wildlife Conservation Board in 2012. Areas being worked on now border the Six Rivers National Forest, including old-growth stands of cedar.

Port Orford cedar is an ancient tree species – one of cultural significance to Native American tribes of the Pacific Coast – whose historic range is restricted to portions of southwest Oregon and northwest California. These stands are currently threatened by the Port Orford cedar root rot, a fungal pathogen that has been decimating Port Orford cedar throughout the species' range in recent years. The project protects Port Orford cedar stands in an area where the root rot has not yet taken hold. The proposed easements are one step that can help reduce the risk of future infection.

The project area also occurs within a population stronghold of the Pacific fisher, a meso-carnivore that used to be more widespread, but which is currently a candidate for formal listing as Endangered by the United States Fish and Wildlife Service.

*Continued on page 4*

### IN THIS ISSUE

From the Board President	2
Kneeland Glen Farmstand	3
Donor Voices	3
Panther & Summit Creek Projects	4
Red Mtn. Conservation Easement	5
Martin Slough Restoration	5
Annual Celebration	6
NRLT Supporters	7
Calendar of Events	8
About the Artist	8

## Board of Directors

**President, Martha Spencer**, Ret. Supervising Planner, Humboldt Co. Planning Div.

**1st Vice President, Dennis Rael**, Owner, Los Bagels Company, Inc.

**2nd Vice President, Leland Mora**, Owner, Humboldt Auction Yard & Humboldt Grassfed Beef

**Secretary, Jill Hackett**, Owner, Ferndale Farms

**Treasurer, Blake Alexandre**, Owner, Alexandre Family EcoDairy Farms

**Greg Blomstrom**, Forester, Baldwin, Blomstrom, Wilkinson & Assoc.

**Clif Clendenen**, Owner, Clendenen's Cider Works

**Yvonne Everett**, Professor, Natural Resources Planning, Humboldt State University

**Gary Flosi**, Retired Senior Environmental Scientist, CA Dept. of Fish & Wildlife

**Rees Hughes**, Retired University Administrator, Humboldt State University

**Ann King Smith**, Retired Cultural Resources Consultant

**Mandy Marquez**, Business Banking Officer, U.S. Bank

**Mark Moore**, Owner, Lone Star Ranch

**Aaron Newman**, Commercial Fisherman, F/V Maria Isabel

## Board of Advisors

James Able

Mark Andre

Heidi Bourne

Bill Bragg

Maya Conrad

Jeff Dunk

Zuretti Goosby

Annette Holland

Aldaron Laird

Rollie Lamberson

David McMurray

Dina Moore

Fred Neighbor

Colleen O'Sullivan

Chuck Powell

Rondal Snodgrass

Eddie Tanner

Ryan Wells

## Staff

**Michael Cipra**, Executive Director

**Lindsay Green**, Projects & Stewardship

**Shayne Green**, Projects & Stewardship Director

**Debbie Marshall**, Admin. Assistant

**Sarah Pilkington**, Outreach & Development Director

## Volunteer

Leslie Scopes Anderson, Newsletter Layout

*The Northcoast Regional Land Trust is a member of the Land Trust Alliance, California Council of Land Trusts, California Northern Region Land Trust Council & Northern California Assoc. of Non-profits*

**Newsletter published by NRLT twice a year**

P.O. Box 398, Bayside, CA 95524

Phone: 707.822.2242; Fax: 707.822.5210

info@nrlt.org; www.nrlt.org

## From the Board President

**D**uring the most recent California Northern Region Land Trust Council conference, an Executive Director from another land trust said something that really resonated with me. He said, "We stay here on purpose." *We stay here on purpose.* Whether we stay here because we are a part of a fifth generation ranching family, or because of the incredible bounty of natural resources in the region and the vast array of healthy local food choices, or because of the direct access to numerous wild places, or just because it is such a beautiful place to be and raise families – we stay here on purpose. We make a choice, everyday, to live here.

The mission of the Northcoast Regional Land Trust compliments this choice. We are honored to work to protect and conserve the many wonderful natural resources and working lands in our region and our unique way of life. This year, we worked on projects to protect a globally rare plant species at Red Mountain, conserve Port Orford cedar around Willow Creek, restore fish habitat and reduce flood risk at Martin Slough, and design another phase of restoration at Freshwater Farms Reserve that enhances coho salmon habitat while improving conditions for grazing. We were also able to initiate 33,000 acres of new conservation easement projects on working ranch and forest lands in Humboldt, Trinity, and Mendocino counties – these exciting projects are in the initial phase of development, and we'll be sharing more about them this coming spring. In 2015, we also plan to break ground on a nature trail at Freshwater Farms Reserve that you can walk with your family.

As the Board President for the past year, I have been especially honored to work with an incredible group of Board members, advisors, and staff. I would like to offer a special thanks to Fred Neighbor as he steps away from the Board after 9 years of service. Fred's unique ability to offer sage advice with humor helped to keep us focused on our mission and maintain positive relationships both on the Board and in the community. Fred's care and commitment will continue as he stays on as an advisor to the Projects Committee. I would also like to honor Andy Elsbree of Green Diamond Resource Company, who has stepped off the board to move to Oregon. Andy's strong analytical skills and expertise in finance and forestry were a huge help to the organization. Last, we say goodbye to Debbie Marshall, our fabulous Administrative Assistant. Debbie has decided to retire at the end of the year – her passion for the organization, patience, wisdom, and dedication to the job will be sorely missed.

As we say goodbye to these special people, we welcome some wonderful new additions to the NRLT family. We are pleased to announce the addition of Gary Flosi to our Board. As a retired Senior Environmental Scientist for the California Department of Fish and Wildlife, Gary has a lifetime of expertise in fisheries and agency/landowner collaboration. We also welcome back Ann King Smith, a past NRLT Board member, whose background in cultural resources and working with local tribes is invaluable. Lastly we welcome Mark Moore of Lone Star Ranch to the Board, a fifth generation rancher with a wide breadth of community service as a past Humboldt Del Norte Cattlemen's Association President, long time member of the Humboldt County Resource Conservation District, and founding member of the Yager/Van Duzen Environmental Stewards.

We move into 2015 with new projects, new energy, and a strong sense of purpose and community support. We thank everyone who helped to make this happen – we could not do it without you!

*Martha Spencer*



**Welcome Gary, Ann and Mark!**

# Producer Profile: Kneeland Glen Farmstand

By Kathy Mullen

Freshwater has played an important role in Humboldt County's agricultural development for many years. This productive and scenic land, which has been historically used for farming is now making a revival thanks to local producers and the dedicated work of the Northcoast Regional Land Trust at Freshwater Farms Reserve, where the success of compatible uses of wild and working landscapes is demonstrated.

My family's relationship to the Freshwater community and Freshwater Farms Reserve started long ago. As the owner of a fifth generation cattle ranch in Kneeland, Freshwater was close to home. When I learned that NRLT had gained ownership of the property and was looking for tenants, I seized the opportunity as I was looking for a place to showcase my love of agriculture, farming, our local community, and the home cottage industry. As the property was once an old dairy, it was a wonderful way to carry on the farm's tradition by hosting my family's homemade soap business, Kneeland Glen Goat Milk Products.

The Mullen family has a long history of being involved in 4-H, which is how the soap milk business came to be, through my daughter's love of goats. One day we found a recipe for milk soap from her great-grandma Jennie, who had run a dairy on our ranch during the depression. My daughter and I decided to make the soap

and share about how it came to be for a 4-H presentation, which ended up taking her to the state level where she won gold. In the process, we had made a lot of soap which we gave to the judges and many of our friends. Everybody loved it



and suggested we make more – it was from there that everything blossomed. We began expanding, selling at farmers markets and online. Needing a site to grow in, we moved to Freshwater Farms Reserve.

In less than two years, we have helped to bring the property back to life, restoring the gardens as well as the old cottage, which is now the Kneeland Glen Farm Stand. It has been a dream come true, an endeavor that I have put my heart and hard work into, letting the community lead me in terms of their needs so that we can create a place where locally produced products are available, fresh produce and herbs are as close to the source as possible, and people are reconnected with the land.

We also have been able to incorporate Mullen ranch's love of apples into the farm stand, selling old varieties of apple trees we have reestablished on the ranch. We have brought down the original apple press that was in our barn from the 1800's, and we welcome people to bring their apples by the



stand and make cider. Being a cooperative, we support and host other local farmers and home producers. And, being a community infused project and vision, we have become a gathering place and will continue to host potlucks with locally produced products and festivities such as scarecrow making and pumpkin carving contests.

We will continue to work beside NRLT to help conserve this land in the way it deserves to be taken care of. Partnering with them has been a wonderful fit, as we share the same goals to support and care for the wild and working places we all love – to preserve agriculture, wildlife, and our way of life. The Kneeland Glen Farmstand could not have grown into what it is without the support of the community. Thanks to all!

## Donor Voices: Richard Hansis

NRLT Legacy Donor, Private Landowner

When I finally got around to writing my will – sort of like making an appointment with the dentist knowing that you have a major tooth problem – I wanted to make sure that the hard work I had done on my land since acquiring it in 2001 would be carried on in the future. This is what inspired me to gift my 160 acre Timberland Production Zone property north of Berry Summit to the Northcoast Regional Land Trust.

For the past six years I have been thinking this tanoak challenged property by myself with cost sharing help from CAL

FIRE's California Forest Improvement Program and Natural Resources Conservation Service's Environmental Quality Incentives Program. I was taught how to run a chainsaw and drop trees by a young faller who helped me thin a portion of my property and have since completed more than 130 acres. I am currently thinning a stand of tanoak, which has trees up to 5 feet in diameter and more than 100 feet tall. My next project will involve protecting a stand of large white and black oaks from substantial Douglas fir encroachment. One of my main goals is to make the land as resilient as possible in the face of climate change. To this end, I have planted ponderosa pine, Douglas fir, Port Orford cedar and western red cedar on appropriate parts

of the property. If anyone knows of a source for blister rust resistant sugar pine, I would appreciate the help!

NRLT has done significant work in trying to improve policy support for private landowners in order to maintain viable working and wild lands, particularly through a collaborative, incentive-based effort to help landowners restore and maintain oak woodlands on their properties. Though I hope that NRLT does not obtain possession for quite a number of years, naming them as the beneficiary of this property gives me peace of mind because I trust that they will care for the property as I have – prioritizing maintaining a healthy forest, while conserving the aspects of the landscape we have all grown to love.



Jason M. Garlick  
Attorney at Law



CHRIS BELL  
Appraisal Associates

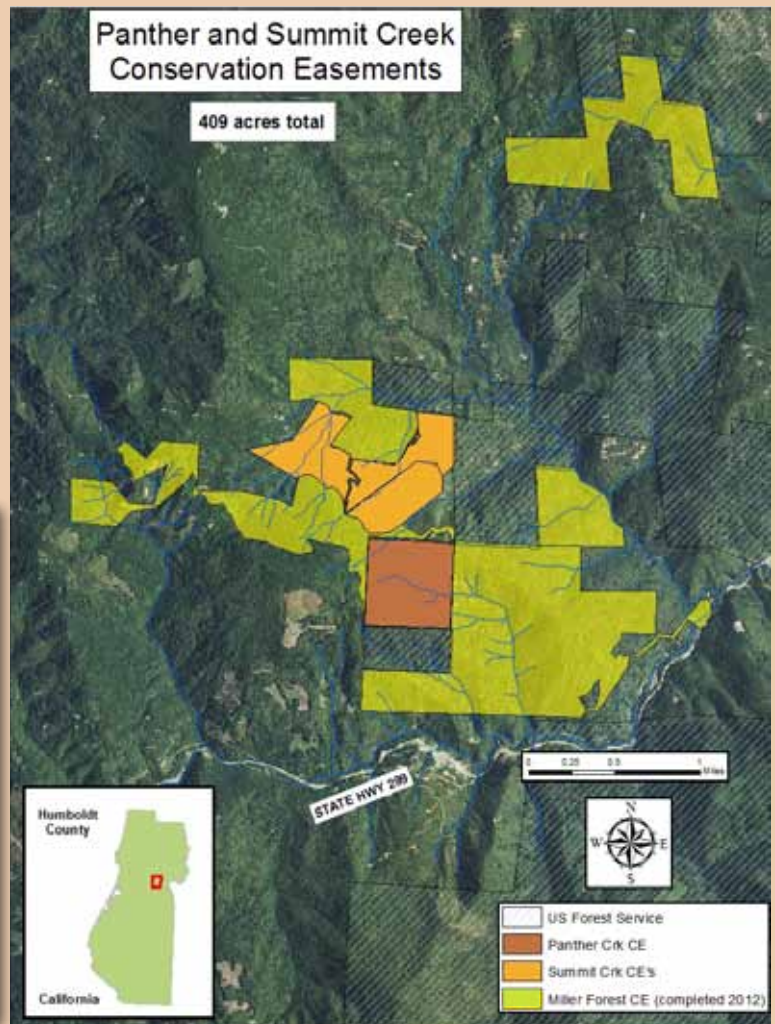
## Private Landowners Help to Expand Port Orford Cedar Reserve

*Continued from page 1*

The Summit and Panther Creek easements are situated in a manner that maximizes their conservation benefit. They provide habitat connectivity and buffer previously conserved areas from nearby and prospective future developments. Once completed, this project will demonstrate how collaborative efforts can work across property boundaries to positively affect the landscape as a whole, protecting large amounts of working forests for ecological, economic, and social benefits.



*Land owner, Steve Miller*



*Land owners, John Ridlon & Clifford Gibson*



*Double rainbow from Berry Summit – view of connected lands conserved through NRLT projects*

## Martin Slough: Where the Cows Graze and the Fish Swim Free

This fall, the long-awaited Martin Slough fish passage improvement, habitat restoration, and flood control project took a huge leap forward. Working with our partners at Redwood Community Action Agency, the California State Coastal Conservancy, the Humboldt Bay Harbor Recreation and Conservation District, and the California Water Board, we proceeded with installation of a new, state-of-the-art tide gate at the confluence of Martin Slough and Swain Slough, on prime agricultural land located at the southern edge of the City of Eureka. With full installation expected before December, the new tide gate replaces three decrepit tide gates that engineers had identified as likely to fail as soon as this winter.

This improvement immediately reduces the risk of catastrophic flooding and salt-water inundation of productive agricultural land and the Eureka Golf Course located upstream. Just as importantly, this tide gate is a lifeline for threatened coho salmon, which can now pass freely between the freshwater rearing habitat upstream on the Eureka Golf Course and the slough streams that lead to the mouth of the Elk River and beyond, to the broad ocean where these fish live most of their lives.

Thanks to diligent monitoring by the California Department of Fish and Wildlife, juvenile salmon that have managed to sneak through the broken tide gates have been tracked in this system for years, and the upstream rearing habitat in the Golf Course's freshwater ponds is among the finest anywhere on the North Coast – resulting in healthier, faster-growing fish that are more likely to survive when they move to the ocean.

This is the first phase of the overall Martin Slough Enhancement Project envisioned



*Tide-gate replacement work at Martin Slough*



*Juvenile coho salmon*

by the Land Trust and our partners when we took on the responsibility of managing this land in 2008. We are planning the second phase of restoration, possibly beginning as soon as the summer of 2015. The end result of this collaborative work

will be a project that continues to balance agriculture with healthy rearing habitat for salmon and other species. This new tide gate is the lynchpin of the larger project, and it will continue to provide benefits for cows and coho long into the future.



*Allan Renger, CA Department of Fish and Wildlife*

## Red Mountain Project to Protect Rare Pea

Native plant enthusiasts are working with NRLT to protect a globally rare plant population that lives on the shoulders of their Red Mountain parcel in southeastern Humboldt County. The parcel includes a unique geological formation that is inhabited by the cryptic two-flowered pea (*Lathyrus*

*biflorus*). This plant species is restricted to the slopes of Red Mountain, with about 95% of its entire population occurring on the subject parcel. In the coming months, NRLT and the landowners will be developing a conservation easement that protects the pea, the property's unique geology, and associated forest habitat.



## Celebrating the Wild and the Working

On Saturday, October 11th friends, family, and supporters came together to celebrate the bountiful wild and working lands in Humboldt, Trinity and Del Norte counties, as well as the diverse people who work collaboratively to keep our land productive, our water and wildlife healthy, and our economy vital.

People from varying backgrounds, walks of life, and political perspectives broke bread together – a full dinner of locally-produced seafood, lamb, beef, vegetables, and fruit, all from North Coast producers. Lee Mora of Humboldt Auction Yard led the Land Trust's lively auction, with fellow board member Mandy Marquez. Many of the creative items featured local production and focused on experiences to get people out on the land – private ranch stays, farm to table meals and tours, horseback rides, fishing, hunting and sailing trips, getaways near and far, locally produced meat, CSA farm shares, firewood, private music parties, beer tastings, and art inspired by our idyllic local landscape.

“We could not do the work of protecting thousands of acres of our productive land and water without such broad community

support,” said Mike Cipra, the Land Trust's Executive Director. “To see it all come together on one night was inspiring.” With a full room of many generous individuals and businesses, the event brought in nearly \$67,000. The success of this event reaches beyond the money raised and into something far more lasting and important – relationships built on the foundation of our common love for the land.

A gathering of this size and success demonstrates the unique and incredibly generous community we live in. Many thanks are given to the farmers, producers, landowners, businesses, board members, advisors, staff, volunteer organizations and various individuals who helped make the magic happen! **A special thanks to our event sponsors:** North Coast Co-op, Pierson Building Center, Humboldt Redwood Company/ Mendocino Redwood Company, American Ag Credit, Emerald City Laundry, Humboldt Grassfed Beef, Pacific Watershed Associates, The Land Man, The Shaw Group, Zwerdling, Bragg, and Mainzer, Humboldt Land Title Company, Alexandre Family EcoDairy Farms, Clendenen's Cider Works, Ferndale Farms and Los Bagels.



Local FFA and 4-H Volunteers  
Photos: Richard Duning



### Thanks to event supporters & volunteers

Additional thanks to our *Get It Done* Fund donors & auction winners (p.7)

Aaron Newman  
Alan Sanborn  
Aldaron Laird  
Aleda Cloud Weise  
Alexandre Family EcoDairy Farms  
Alexandre Kids  
Almquist Lumber  
American AgCredit  
AmeriCorps AFACTR  
Amy Kumler Photography  
Andy Araneo  
Ann King Smith  
Annette & Greg Holland  
Arcata School of Massage  
Arcata Scoop  
Barbara Groom  
Baroni Designs  
Baywood Golf and Country Club  
Benbow Historic Inn  
Booklegger  
Brandon Barnwell  
Briceland Vineyards  
Brick & Fire  
Brio Breadworks  
Bruce Johnson  
Bubbles  
CA Conservation Corps  
Café Brio  
Café Waterfront  
California Redwood Company  
Caravan of Dreams  
Carter House Inns & Restaurant 301

Casteel Custom Bottling  
Catin Blair Designs  
Center Arts  
Charlie Butterworth  
Christine Barkdull  
Christine Fiorentino  
Chumayo Spa  
Clendenen's Cider Works  
Clif Clendenen  
Coast Seafoods Company  
Crush  
Cypress Grove Chevre  
Daniel Wright  
David & Madeline McMurray  
David Imper  
Debbie Marshall  
DeepSeeded Community Farm  
Dennis Rael & Carol Falkenthal  
Doris & Daughter Catering  
Duncan McNeil  
Earthly Edibles Family Farm  
Emerald City Laundry  
England Marine Supply Co.,  
Eureka Payments  
Exclusives Body by SAM  
Faith Mason  
Far North Climbing Gym  
Faye Honorof  
Ferndale Farms  
Finnish Country Sauna & Tubs  
Fire and Light  
Flora Organica  
Flora Organica Designs  
Fred Neighbor  
Gabriel's  
Garden Gate  
Gary & Jan Folsi

Gary Friedrichsen  
Green Diamond Resource Company  
Greg Blomstrom  
Hair Unlimited  
Harry Blumenthal  
HealthSPORT  
Heidi Bourne  
Henry's Olives  
Heyduke Publishing  
Holly Yashi  
HSU Athletics Department  
HSU Volunteers  
Humboldt Bay Harbor Cruise  
Humboldt Bay Rowing Assoc.  
Humboldt Co. Sheriff's Office  
Humboldt Distillery  
Humboldt Grassfed Beef  
Humboldt Land Title Company  
Humboldt Redwood Company  
Indigo Dog House  
J & W Liquor  
Jack & Shore McLeod  
Jenny Ripple  
Jim McVicker  
John Lee  
JSG Studios  
Katherine & Frederick Morehouse  
Katy & Mike Yanke  
Kellogg Garden Products  
Ken & Jackie Fulgham  
Kenneth Bay  
Kinetic Coffee  
Kneeland 4-H  
Kneeland Glen Farmstand  
Kokatat  
Korobi Stables

Kristen Girard-Magnuson  
Kyoto Japanese Restaurant  
Lambda Theta Alpha Latin Sorority  
Lee & Eileen Mora  
Les & Janet Barnwell  
Lisa Landis  
Lisa Marie Waters  
Liscom Hill Pottery Works  
Little River Farm  
Living Quarters  
Loleta Cheese Factory  
Lone Star Ranch  
Los Bagels  
Lost Coast Brewery  
Loving Hands Institute  
Lynn Baker  
Mad River Brewing Company  
Mad River Gardens  
Mad River Glass  
Mandy & Mark Marquez  
Mark Cortright  
Martha Spencer & Eric Nelson  
Maya Conrad  
McKenzie Riverside Cottages  
Mel & Holly Krebs  
Melanie Getman  
Mendocino Redwood Company  
Michael Guerriero  
Michael Pearce  
Mike & Jane Cipra  
Mike & Leslie Anderson  
Mike Renner  
Mission Linens  
Neukom Family Farm  
North Coast Cleaning Services Inc.  
North Coast Co-op

North Coast Events & Rentals  
Northcoast Horticultural Supply  
Northtown Books  
Oregon Shakespeare Festival  
Organic Matters Ranch  
Pacific Choice Seafood  
Pacific Watershed Associates  
Patricia Sennott  
Peter Busman  
Peter Jermy  
Pierce Family Farm  
Pierson Building Center  
Pilot Rock Ramblers  
Plaza Grill  
Plaza: Be Inspired  
Ramone's Bakery & Cafe  
Redwood Coast Music Festival  
Redwood Curtain Brewing Company  
Redwood Curtain Theatre  
Redwood Empire Golf  
Rees Hughes  
Renaissance Computing  
Renée Crowley  
Rex Bohn  
Richard Duning  
Richard Jackson  
Ripple Creek Cabins  
Rita's Margaritas & Mexican Grill  
River Lodge  
Rob Parks  
Rob Thompson  
Robert Goodman Wines  
Rollie Lamberson  
Rotoact  
Rustic West Trading Company

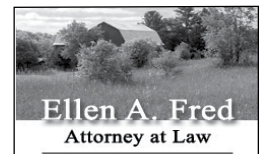
Sarah & Corin Pilkington  
Schorr Berman  
Seth Magnuson's Infinite Design  
Shakefork Community Farms  
Sharon Ferrett  
Shayne & Lindsay Green  
Sirens Song Tavern  
Soul to Soul Spa & Foot Bar  
Stephen & Sharon Davies  
Stephen Rice  
Steven & Carol Vander Meer  
Stock Schlueter  
Sun Valley Floral Farms  
Sushi Spot  
Terra Pearson  
The Land Man  
The Lost Whale Inn  
The Other Place  
The Requa Inn  
The Shaw Group  
Tim & Jackie Pricer  
Tom & Jennifer Fulkerson  
Tom & Nancy Bessette  
Tom Benzing  
Tracy Schilling  
Trinidad Bay Charters  
True Motion Fitness  
Trula's Treats  
Valley West Hair Care Salon  
Warren Creek Farms  
Wes Chesbro  
Wildberries Marketplace  
Willow Creek Farms  
Yvonne Everett  
Zuretti & Brenda Goosby  
Zwerdling, Bragg, Mainzer, LLP



Aldaron Laird  
Environmental Planner



DANCO



The Harland Law Firm LLP

# THANK YOU NRLT Members and Supporters!

The Northcoast Regional Land Trust is forever grateful to the following who gave cash grants, donations or support from October 16, 2013 through October 15, 2014.

*The Northcoast Regional Land Trust is a tax-exempt, nonprofit, 501(c)(3) organization listed with the Internal Revenue Service under EIN #68-0456290. All donations are tax deductible.*

## Agencies & Foundations

CA Council of Land Trusts  
CA Department of Fish and Wildlife  
CALFIRE  
CA Northern Region Land Trust Council  
CA State Coastal Conservancy  
CA Wildlife Conservation Board  
City of Eureka  
Clif Bar Family Foundation  
Community Alliance for Family Farmers  
Dean Witter Foundation  
Friends of the Dunes  
Humboldt Area Foundation  
Land Trust Alliance  
Marisla Foundation  
McLean Foundation  
Natural Resource Conservation Service  
New Belgium Brewing Company  
NOAA Fisheries  
Norcross Wildlife Foundation, Inc.  
Northern California Association of Nonprofits  
RCAA Natural Resources Services  
Redwood Region Audubon Society  
S. D. Bechtel, Jr. Foundation  
Umpqua Bank  
U.S. Bank  
U.S. Fish & Wildlife Service  
U.S. Forest Service, Forest Legacy Program  
Yager/Van Duzen Environmental Stewards

## Active Lifetime Members

*A special thanks to these members who have continued to sustain NRLT. See a full list of Lifetime Members at: [nrlt.org/partners](http://nrlt.org/partners).*

Blake & Stephanie Alexandre  
Gary & Lynn Baker  
Gloria Barnwell  
Les & Janet Barnwell  
Barbara Barratt  
Bob Battagin & Deborah Fitzpatrick  
Schorr Berman  
Joan Berman  
Greg Blomstrom  
Harry Blumenthal & Scott Mitchell  
Bill Bragg & Lee Roscoe-Bragg  
Ross Burgess  
Francis & Carole Carrington  
Maya Conrad  
Renee Crowley  
Stephen & Sharon Davies  
Stan & Judy Dixon  
Yvonne Everett & JUDGE Mayer  
Julie Fulkerson & Lynn Evans  
Shayne & Lindsay Green  
Jill & Steve Hackett  
Danny Hagans  
Richard & Nancy Head  
Judith Hinman  
David & Heidi Hodges  
Annette & Greg Holland  
Harvey & James Kelsey  
Ann King Smith  
Roland Lamberson & Michele Olsen  
Tom Lisle & Lori Dengler  
David & Madeline McMurray  
Steve Miller & Yvonne Schell  
Lee & Eileen Mora  
Fred Neighbor & Joyce Hough Neighbor  
Margaret Nulsen & Chris Frolicking  
Felicia Oldfather  
Rob Parks  
Tim & Jackie Pricer  
Dennis Rael & Carol Falkenthal  
Jeff & Edith Schwartz  
Martha Ann Spencer & Eric Nelson  
Francis Sweet  
Ronald & Donna Thompson  
Bill Thompson  
John & Nancy VanSpeybroeck

Marty & Dan Vega  
Mock Wahlund  
Lynne Zeleny

## Steward's Circle

*A special thanks our monthly donors.*

*To sign up go to: [nrlt.org/Stewardscircle](http://nrlt.org/Stewardscircle).*

Harry Blumenthal & Scott Mitchell  
Bill Bragg & Lee Roscoe-Bragg  
Laura & Bob Chapman  
Maya Conrad  
Gail Coonen  
Renee Crowley  
Andy & Dawn Elsbree  
Rees Hughes & Amy Uyeji  
Ann King Smith  
Roland Lamberson & Michele Olsen  
David & Madeline McMurray  
Susan Moskaly  
Martha Ann Spencer & Eric Nelson

## Big Leaf Maple (\$500-\$999)

Anonymous (1)  
G. Clark & P. Logan  
Berit Meyer & Brian Ferguson  
Mark & Dina Moore  
Aaron Newman  
Sean & Kathy O'Day

## Black Oak (\$250-\$499)

Anonymous (1)  
Greg Anderson  
Michael & Jane Cipra  
Frank Cox  
Betsy Filippini  
Kenneth & Jackie Fulgham  
Lindsay & Shayne Green  
Peter Holmstrom  
Chris & Lisa Howard  
Erik Jansson  
Mike & Cindy Jeffers  
Mike & Rene Miles  
Terry & Erica Roelofs  
Mike & Katy Yanke

## Madrone (\$100-\$249)

Anonymous (8)  
Catherine & Thomas Allen  
Mark Andre & Nancy Rehg  
Celestine B. Armenta  
Tom & Nancy Bessette  
Heidi & Bill Bourne  
Greg Bundros & Teri Huber-Bundros  
Charlie Butterworth  
Paul & Deborah Carpenter  
Xiaozhen Chen  
Patrick Cleary & Catherine Koshkin  
Russell Conrad  
Nancy Correll & Richard Duning  
Kelli Costa  
James Derden & Judith Little  
Donald Dicken  
Uri & Chris Driscoll  
Joan Early  
Jud Ellinwood & Anda Webb  
Gary Flosi  
Susan Frances & Ken Yanosko  
Corrine Frugoni  
Don & Sylvia Garlick  
Evelyn Giddings & David Lemm  
Kay Green  
Dick Hansis  
Thomas Hofweber  
David & Krista Holmstrom  
Rees Hughes & Amy Uyeji  
Rich & Carolyn Hunt  
Scott & Sandi Hunt  
Bill & Lynda Hutton  
Ardene Janssen

Roz Keller & Andy Aranco  
Mel & Holly Krebs  
Richard LaForge  
Kathy Layton  
Norma Lorenzo  
Debbie Marshall  
Elizabeth Marshall  
Chris McAuliffe  
Kate McClain  
Rusty & Alverna Moore  
Wes Moore & Leslie Cottrell Moore  
Ben & Ananda Morehead  
Archie & Sue Mossman  
Denise Newman & Mitch Block  
Tim & Marylyn Paik-Nicely  
Janice Parakilas & Roy Baker  
Claire & Gene Perricelli  
Sarah & Corin Pilkington  
James D. Poovey  
Burt & Cynthia Rees  
Larry & Becky Simpson  
Emily Sinkerhorn  
Howard & Rebecca Stauffer  
Eddie Tanner  
Mike & Nancy Tout  
Dave & Gail Turner  
Mike Wallace  
James & Virginia Waters  
Lonnie Wellman  
Jana & Lynn Wilkins  
Clay Yerby  
Gretchen Ziegler

## Manzanita (up to \$99)

*We graciously thank our donors that gave up to \$99. For a full list visit: [nrlt.org/partners](http://nrlt.org/partners).*

## In-Kind Donations

*Doesn't include Annual Celebration (see p.6)*

Action Rentals  
Aldaron Laird  
B & B Portable Toilets  
Brett Shuler Fine Catering  
Briceland Vineyards  
Bug Press  
Clendenen's Cider Works  
Corin Pilkington  
Eel River Brewery  
Ferndale Farms  
Jane Cipra  
Julian Berg Designs  
Leslie Scopes Anderson  
Los Bagels  
Mission Linens  
Northcoast Cleaning Services, Inc.  
Precision Intermedia  
Shots Coffee  
Singing Tree Gardens Nursery  
Tom Gill

## In Memory Of

*Kevin Ebbert:* Erik Jansson  
*Brian Hunt:* Scott & Sandi Hunt  
*Barbara Logan:* G. Clark & P. Logan,  
Donald Dicken, David & Krista  
Holmstrom, Peter Holmstrom  
*Randy W. Moore:* Rusty & Alverna Moore  
*Susan Parks:* Rob Parks  
*Tom Rowe:* Jana & Lynn Wilkins

## In Honor Of

*Heidi Bourne:* Kathleen Stroup  
*Maya T. Conrad:* Russell Conrad  
*Lindsay & Shayne Green and Seth & Kristen Magnuson:* Cindy & Mike Jeffers  
*Ann King Smith & Greg Blomstrom:* Corrine Frugoni

## Our Business Partners

**Make our community strong.  
Please support the following businesses:**

*Does not include Annual Celebration donors. (See page 6)*

A.M. Baird Engineering & Surveying  
Able Forestry Consulting  
Aldaron Laird Consulting, Trinity Associates  
Alexandre Family EcoDairy Farms  
Almquist Lumber Company  
American AgCredit  
American Hydroponics  
Anderson, Lucas, Somerville & Borges, LLP  
Arcata Scoop  
Arcata Scrap & Salvage  
Azure Bay Psychotherapy  
Baldwin, Blomstrom, Wilkinson & Associates  
Brooks Appraisal Service  
Bug Press  
Charlie & Kyla Tripodi, Coldwell Banker Cutten Realty  
Chris Bell Appraisal Associates  
Clendenen's Cider Works  
DANCO  
Deep Seeded Community Farm  
Emerald City Laundry Company  
Ferndale Farms  
F.J. Wheeler Consulting  
GreenWay Partners  
Hair Unlimited  
Harlan Law Firm, LLP  
Hohman & Associates Forestry Consultants  
Hooven & Co., Inc.  
Humboldt Association of Realtors  
Humboldt Auction Yard  
Humboldt Bay Harbor District  
Humboldt Grassfed Beef  
Humboldt Land Title Company  
Humboldt Redwood Company  
Jason M. Garlick, Attorney at Law  
Jeremy Stanfield, Landmark Real Estate  
Larry Parker, Benchmark Realty Group  
La Trattoria  
Law Offices of Catherine M. Koshkin  
Law Offices of Nancy Diamond  
Lone Star Ranch  
Los Bagels  
Lost Coast Brewery  
Mad River Brewing Company  
Maya Conrad, Realtor, EcoBroker, Coldwell Banker  
Sellers Realty  
Mendocino Redwood Company  
Mock Wahlund, Coldwell Banker Cutten Realty  
North Coast Cleaning Services, Inc.  
North Coast Co-op  
Pacific Builders  
Pacific Watershed Associates  
Pierson Building Center  
Precision Intermedia  
Ramone's Bakery & Cafe  
Redwood Capital Bank  
Redwood Curtain Brewing Company  
Renata's Creperie  
Roy E. Corsetti, CPA  
Shots Coffee  
Solutions  
The Historic Requa Inn  
The Shaw Group  
Timber Ridge  
Umpqua Bank  
U.S. Bank  
Victoria Copeland, Ming Tree Realtors  
Wildberries Marketplace  
Zwerdling, Bragg & Mainzer, LLP

*Aldaron & Christy Laird, Riley & Kathy Quarles, the Hosterman Family, Randy & Mary Klein and Dave Mulhern:* Anonymous  
*David & Madeline McMurray:* Anonymous, Jeff & Edith Schwartz



**SOLUTIONS**  
Hemp\*Recycled\*Organic  
Everyday sustainable styles



**ROY E. CORSETTI** CPA  
AN ACCOUNTANCY CORPORATION  
CERTIFIED PUBLIC ACCOUNTANT



**Bug Press**  
COMMERCIAL PRINTING  
DESIGN  
TYPESETTING





**NORTHCOST REGIONAL LAND TRUST**  
 P.O. Box 398  
 Bayside, CA 95524

NONPROFIT ORG  
 US POSTAGE  
 PAID  
 Eureka, CA  
 Permit No. 46



## CALENDAR OF EVENTS

**Land Trust Holiday Party: Friday, December 12, 4-7 p.m., NRLT Office.** Join landowners, conservation specialists, board members, advisors, staff and our members as we celebrate the holidays.

**Freshwater Farms Interpretive Walks: TBA, Visit [nrlt.org](http://nrlt.org).** Experience, firsthand, beautiful tidal salt marsh and pastureland at the Land Trust's restoration of wetland on the 74-acre Freshwater Farms Reserve. Each walk features a guest speaker.

**Canoe-the-Slough: TBA, Visit [nrlt.org](http://nrlt.org).** Paddle Humboldt Bay and the Freshwater Slough with a NRLT naturalist. Learn about the Bay's natural environment and the changes it has seen throughout the decades.

**Lay of the Land: Second Thursdays, 4 to 5 p.m., NRLT Office.** Join the Land Trust for the Lay of the Land, a one-hour presentation that gives an overview of what we are doing to protect and enhance our region's farms, forests, rangelands and natural areas. This presentation is also given at house parties and in community venues. Contact Sarah at [s.pilkington@nrlt.org](mailto:s.pilkington@nrlt.org).

**NRLT's Mission** *The Northcoast Regional Land Trust is dedicated to the protection and economic viability of working landscapes, farms, forests and grazing lands, and to the preservation and protection of land for its natural, educational, scenic and historic values. We work with landowners on a voluntary basis to promote stewardship of Northern California's healthy and productive resource base, natural systems and quality of life.*

*Special thanks to these sponsors for underwriting this issue:*



## COVER ARTIST – STOCK SCHLUETER

Artist's Statements are as varied as the artists themselves. And they change, as they should, as the artist matures. Like many young painters, I was more interested in having something to say and trying to make a difference than in the work itself. I have found through time that the body of work and the life of observation have become the most important thing. The journey is the destination. The act of painting is the message. All I want to say is, "Look around and see the world we live in".



*Jackson Slough*

### ALSO THANKS TO:

