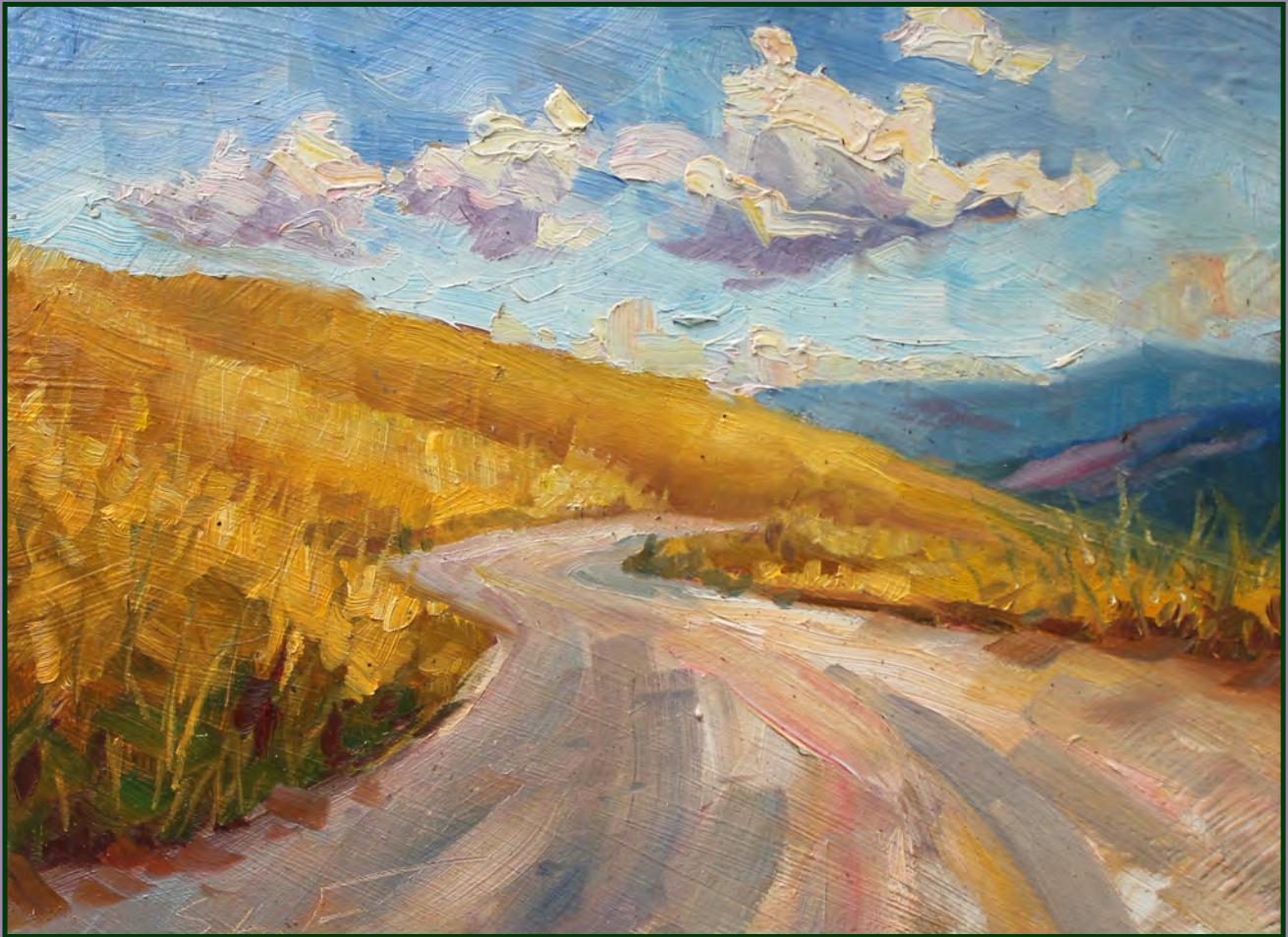


AUTUMN 2015

# NORTHCOAST REGIONAL LAND TRUST



*Summer Sky*

*Leo Stafnsnes*

## Trail Blazing: Freshwater Farms Nature Trail Comes to Life

**Y**ou've been asking for this for a long time – a place close to home where you can walk with your friends and family past rows of healthy crops, over rich pasture, and into the restored salt marsh and estuary habitat at Freshwater Farms Reserve (FWFR). Because of your patience, help and support, this vision of the Freshwater Nature Trail has become a reality. By spring of 2016 we will be ready to welcome public access onto this beautiful property, showcasing the complementary land uses that take place on this community driven project.

On June 1, 2015 we broke ground on the 0.75 mile trail, clearing dense vegetation to unearth a path for you to tread upon. The graveled trail begins in the newly constructed 30 car capacity parking lot just south of the Kneeland Glen Farmstand, where the thinned willows pro-

vide a picturesque view into the center of FWFR. The trail meanders through a willow grove and wetland, offering glimpses of the bounty of produce the Kneeland Glen Farmstand grows and sells onsite.

The gravel trail reverts to a grass path and follows the sinuous curves of Freshwater Slough, where you can see schools of fish, otters, blue herons and other wildlife. At moments you will find yourself surrounded by majestic cottonwoods, lush willows and hearty shore pines, creating a feeling of timelessness and remote natural wonder. Continuing along the trail, cattle can be seen grazing in the interior of the property, as osprey and hawks circle above searching for prey sourced from the abundant rodent population living in the grassy field.

At the second major bend in the trail, a non-motorized boat launch and detailed

map of Humboldt Bay water trails awaits canoers and kayakers. For the summer solstice NRLT hosted a Canoe the Slough

### IN THIS ISSUE

From the Board President	2
Conservation Partnerships	3
Donor Voices	3
Freshwater Farms Nature Trail	4
Diamond D Ranch	5
Boots & Birkenstocks	6
NRLT Supporters	7
Calendar of Events	8
About the Artist	8

*Continued on page 4*

## Board of Directors

**President, Martha Spencer**, Ret. Supervising Planner, Humboldt Co. Planning Div.

**1st Vice President, Greg Blomstrom**, Forester, Baldwin, Blomstrom, Wilkinson & Assoc.

**2nd Vice President, Leland Mora**, Owner, Humboldt Auction Yard & Humboldt Grassfed Beef

**Secretary, Dennis Rael**, Owner, Los Bagels Co., Inc.

**Treasurer, Blake Alexandre**, Owner, Alexandre Family EcoDairy Farms

**Clif Clendenen**, Owner, Clendenen's Cider Works

**Yvonne Everett**, Professor, Natural Resources Planning, Humboldt State University

**Gary Flosi**, Retired Senior Environmental Scientist, CA Dept. of Fish & Wildlife

**Jill Hackett**, Owner, Ferndale Farms

**Rees Hughes**, Retired Administrator, Humboldt State University

**Ann King Smith**, Retired Cultural Resources Consultant

**Mandy Marquez**, Business Banking Officer, U.S. Bank

**Mike Miles**, Director Forest Science, Humboldt/Mendocino Redwood Co., LLC

**Mark Moore**, Owner, Lone Star Ranch

**Jeff Slack**, Attorney, Janssen Malloy LLP

## Board of Advisors

James Able	Aldaron Laird
Mark Andre	Rollie Lamberson
Heidi Bourne	David McMurray
Bill Bragg	Dina Moore
Maya Conrad	Fred Neighbor
Jeff DeMark	Colleen O'Sullivan
Jeff Dunk	Chuck Powell
Zuretti Goosby	Rondal Snodgrass
Annette Holland	Eddie Tanner
Peter Jackson	Ryan Wells
Lee Koffler	

## Staff

**Michael Cipra**, Executive Director

**Shayne Green**, Projects & Stewardship Dir.

**Connie Low**, Admin. Assistant

**Kerry McNamee**, Project Manager

**Sarah Pilkington**, Outreach & Develop. Dir.

## Volunteer

Leslie Scopes Anderson, Newsletter Layout

*The Northcoast Regional Land Trust is a member of the Land Trust Alliance, California Council of Land Trusts, California Northern Region Land Trust Council & Northern California Assoc. of Non-profits.*

Newsletter published by NRLT twice a year  
P.O. Box 398, Bayside, CA 95524  
Phone: 707.822.2242; Fax: 707.822.5210  
info@nrlt.org; www.nrlt.org

## From the Board President

Coming off the heels of our most recent Annual Celebration dinner, I am in awe of the generosity of our community. It was exciting to look out over the crowd and see you, our friends and our family, supporting the work that we do at the Northcoast Regional Land Trust. Your support means we can work on new projects to protect more than 21,000 acres of amazing land – vast oak woodlands, beautiful mature forests, cold and wild salmon-spawning creeks on the Lost Coast, and miles of frontage on the Mad River that support steelhead trout. New projects like the Diamond D Ranch (page 5) keep multi-generation ranches whole, producing local grass-fed beef and uneven-age timber for our dinner tables, homes, and economy. Because of you, we're going to keep protecting the wild and working land you love.

Over the summer, we built the long-awaited nature trail at Freshwater Farms Reserve so that you and your family can see agriculture and restoration in action, cows and Coho co-existing. We're building Freshwater Farms Reserve into a place where our families can enjoy the best of what the North Coast has to offer, while creating a living classroom for our kids as they learn lessons from the land. On May 1, 2016 we're hosting a ribbon-cutting for the Freshwater Nature Trail – join us for an amazing celebration on the land.

It has been an honor to serve as the Board President for the past 3 years. As I step down at the end of the year, we are fortunate to have Greg Blomstrom stepping up as our Board President. Greg is a registered professional forester with over 30 years of experience in forest stewardship. He brings with him an incredible knowledge of both the forest science of our area and the unique challenges that non-industrial timber owners have managing their property. We look forward to his stewardship of the organization!

One reason the Land Trust has been so successful is our incredible staff. Lindsay Green has worked at Northcoast Regional Land Trust for nearly a decade, including 5 years as Executive Director. She built amazing partnerships, stewarded several of our most important land conservation projects to completion, and strengthened the long-term future of the Land Trust. However, now the time has come for Lindsay to move on as she has accepted a position with an international consulting group working on conservation projects in Indonesia. We also say goodbye to Nancy Stevens, our Administrative Assistant. Nancy has taken a job with Stillwater Sciences – her energetic spirit and passion for the organization will be missed.

We are pleased to announce the return of Kerry McNamee as our Project Manager. Kerry is a dynamic addition to our team who brings extensive fisheries habitat knowledge and the ability to relate to a broad spectrum of partners. We also welcome Connie Low, our new Administrative Assistant. Connie has over a decade of experience in administration and accounting, with a BS in Environmental Science. She is a perfect fit with her passion for improving our social, ecological and economic environment for future generations.

Last, I would like to offer a special thanks to Dennis Rael as he steps away from the Board after 9 years of service. Dennis joined the board because he believed in the organization's unique ability to bring together diverse members of our community with common values and the desire to protect both our land and economy. Dennis embodied this belief with his unique ability to contribute to lively discussions with humor, while always keeping us focused on our mission.

In celebrating 15 years of success, I realize that while people move on from the Land Trust, they never truly leave this family. It's because we share a common love of our land, and because we're willing to work together to protect it. You are part of this story of success – now and into the future. Thank you – we can't do it without you!

*Martha Spencer*



*Welcome Kerry and Connie!*

# Partnerships Build Stronger Communities

By Jessica Unmack, North Coast Co-op Board President

This beautiful place we all share here on the North Coast is truly special in many ways. I feel a sense of community not only amongst my own neighbors, but also with others I do not know personally. How does this happen, this building of a strong sense of community? Geography is certainly important in defining a community's physical presence. More importantly, the amount of social capital functioning in a place influences the level of a community's strength.

Social capital refers to the value of social networks and the natural tendencies that arise from these networks to do things for and with each other. It is found in friendships, neighborhoods, churches, schools, clubs, organizational partnerships, civic associations, and even bars. Social capital can assist in building economically and socially viable sustainable communities and environments, can enhance community resilience, and can help build capacity for local disaster preparedness and changes in our environment. So how do we on the North Coast continue building our social capital and grow an even stronger community? One partnership at a time.

Both the Co-op and NRLT are working to protect the environment, promote sustainable agriculture, and support local food production. One of the Co-op's long-range goals is to collaborate in sustainable, local, and regional food system development that addresses gaps in food production, storage and/or distribution. We do this by building relationships that enhance the protection of the North Coast's natural landscapes, economies, and quality of life, and by culti-

vating partnerships that expand our region's agricultural base, and provide consumers with local products year-round, offering fair prices to our shoppers and producers.

NRLT works to protect a wide variety of landscapes, their economic viability, and intrinsic value. They work with landowners to promote stewardship of Northern California's healthy and productive resource base, natural systems and quality of life. NRLT's efforts to protect working lands and waterways for ranching, farming and fisheries ties in directly to the Co-op's long-range strategic goal: Developing Our Local Foodshed.

By recognizing that the Co-op and NRLT have crossover in their supporters and

similar long-term goals, and by partnering to support the preservation of our county's open spaces, working landscapes, and the people who work to produce our food, we are in turn partnering to support our neighbors. We are adding to the social capital that is so valuable in building stronger communities. We are truly stronger together. The Co-op is proud to partner with NRLT to preserve our way of life here on the North Coast!



Local kids at Co-op Pumpkin Patch

## Donor Voices: Deborah Fitzpatrick and Bob Battagin

NRLT Lifetime Members and Major Donors



My family has had a residence in the area for over 40 years and we've always loved the Humboldt outdoors.

Bob and I regularly visit and enjoy birding, hiking and

exploring all that this incredible place has to offer. We support the Northcoast Regional Land Trust because they help conserve the places that speak to us, the places that bring us our health and happiness.

On one of our trips, we went on a walk with NRLT staff and a board member at Freshwater Farms Reserve. To us, this property represents what we and the Land Trust are working to conserve – places that we can go to feel alive. This piece of land is a com-

munity asset, one that can be used now for our families and for generations to come.

With this inspiration, we decided to give the Land Trust a major gift to help the Freshwater Farms Reserve Nature Trail come to life. We wanted to see it become available for the community to enjoy and to learn about the value of biodiversity and natural habitats for plants, animals, and people. It has been very rewarding to watch this project come to fruition. We look forward to the grand opening on May 1, and for the time when we all can enjoy this unique and beautiful space together.

Hunter, Hunter & Hunt, LLP  
CERTIFIED PUBLIC ACCOUNTANTS

Hooven & Co., Inc.

Jitter Bean  
Coffee Co.

ROY E. CORSETTI CPA  
AN ACCOUNTANCY CORPORATION  
CERTIFIED PUBLIC ACCOUNTANT

SOLUTIONS  
Hemp Recycled Organic  
Everyday sustainable styles

JASON J. EADS  
ATTORNEY AT LAW

Renata's Creperie

## Trail Blazing: Freshwater Farms Nature Trail Comes to Life

*Continued from page 1*

event where over 30 boaters paddled from Woodley Island to FWFR. Experiencing the slough from a boat provides a view into the dynamic bay unlike any other.

Following the boat launch, trail users approach the elevated levee portion of trail which offers expansive views of cattle grazing, Freshwater Slough, Wood Creek and the restored tidal marshland. Perched at the levee and extending into the wetland is the newly constructed boardwalk, offering a closer look at the Wood Creek Phase I restoration that took place in 2009. The restoration reconnected the tide to the Wood Creek estuary and also included the excavation of channels and refugia pools for Coho salmon to escape high Freshwater Creek winter flows, creating places for these fish to grow fast and strong.



*AmeriCorps members planting native willows*



*Elisha Green volunteering at FWFR clean up day*

After the impressive boardwalk, the levee trail extends along Freshwater Slough until the trail terminus, where a bench awaits those looking to take in the surrounding beauty. Along the trail, interpretive signs have been installed to help explain the FWFR story, including the native Wiyot foundational narrative, the historic agriculture land use on the property, details of the abundant wildlife onsite, the property's watershed context, and the salt marsh and Wood Creek restoration efforts.

There is much to be proud of at Freshwater Farms Reserve, including the implementation of a successful wild and working lands restoration project, the emergence of the wonderful and abundant Kneeland Glen Farmstead, the continued cattle grazing operation by stewards Sean and Kathy O'Day, and an ongoing commitment to providing our educational programs and interpretive trips.

With the trail, boat launch and boardwalk completed, we are looking ahead with plans to rehabilitate the historic Graham-Long Dairy Barn built in 1910 to include a wet weather classroom for school groups, and various agriculture related ventures. We also plan on revitalizing the old native plant nursery on site, bringing a once vibrant space back to life.

The FWFR Nature Trail is an invitation to you and your family to experience and enjoy the best the North Coast has to offer – with you at the center of it all. If you'd like to get involved in our Trail Stewardship Program or any other FWFR projects, please contact Kerry at [K.McNamee@ncrlt.org](mailto:K.McNamee@ncrlt.org) or (707) 822-2242.



*CCC member working on levee portion of trail*

### Save the Date: May 1, 2016, 1-5 p.m. Freshwater Farms Reserve Nature Trail Grand Opening

Come see the progress on the property and join us for a gathering on the land! There will be locally produced food, live music, guided walks and short presentations. Local landscape artists will also be doing plein air paintings on different parts of the trail showcasing the scenic and pastoral landscape.

A special thanks to our generous supporters and work partners who have helped to make this trail dream a reality: California State Coastal Conservancy, Land Trust Alliance, McLean Foundation, Humboldt Area Foundation, Clif Bar Family Foundation, Pacific Birds Habitat Joint Venture, Redwood Region Audubon Society, S.D. Bechtel, Jr. Foundation, PG&E, RCAA Natural Resources Services, California Conservation Corps, Watershed Stewards Program, Deborah Fitzpatrick and Judith Hinman.



*Above: New signage along FWFR Nature Trail*

## Diamond D Ranch: Land Conservation for the Next Generation

The Northcoast Regional Land Trust (NRLT) is partnering with siblings Trenton and Jennifer Dunn to place a conservation easement on their 2,960 acre Diamond D Ranch, located in southeastern Humboldt County near the town of Bridgeville. The Dunn's are in their 20's and inherited the ranch after cancer tragically took the lives of both parents over a short period of time. The Dunn's asked NRLT to help them pursue a conservation easement as a strategy for keeping this multi-generational ranch intact and working – carrying their legacy of family stewardship forward.

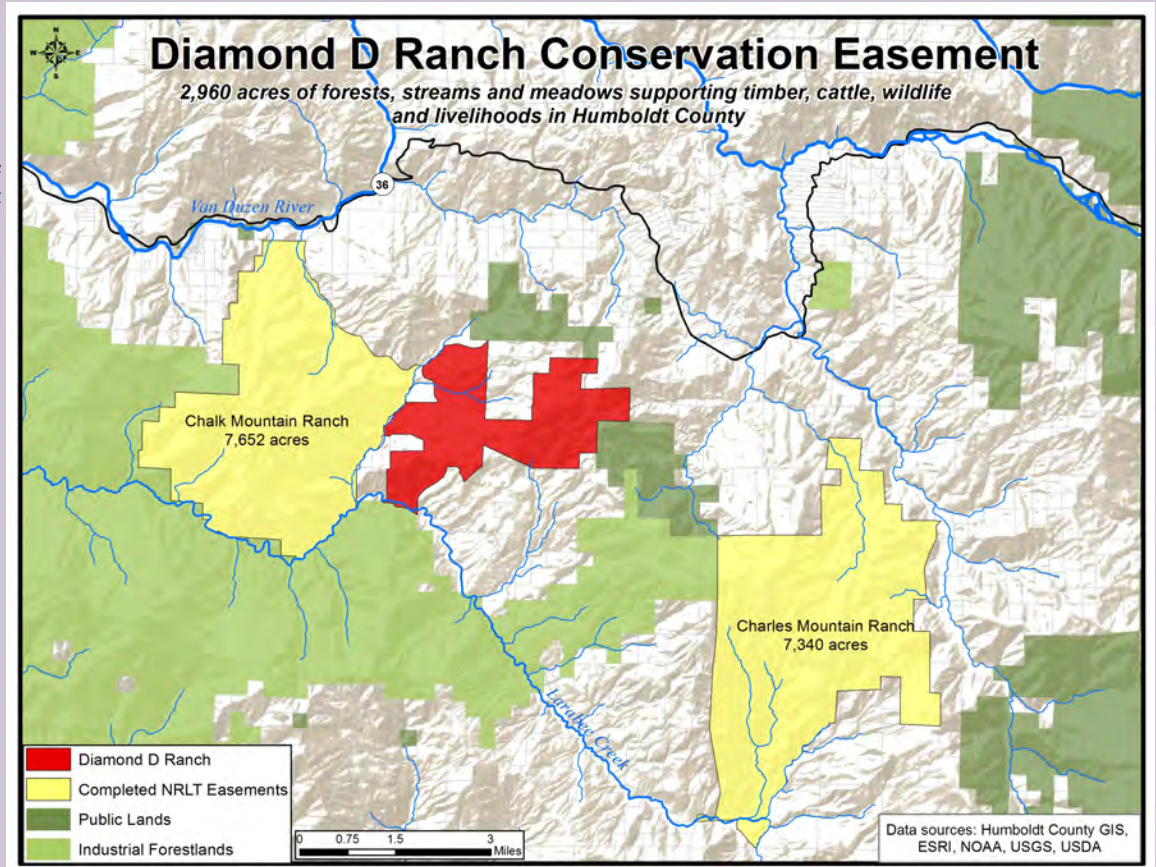
Combined with the previously conserved Chalk and Charles Mountain Ranches, the Diamond D Ranch helps to connect late successional forest reserves in the Six Rivers National Forest to large tracts of undeveloped land to the north and west. These large “cornerstone” ranches anchor 20,000 continuous acres of resource rich lands that include mature conifer forests, iconic oak woodlands, rolling prairies, rock outcrops, and free-flowing streams. Spanning over 4,000 feet in elevation, the Diamond D Ranch is nestled in steep and rugged country and encompasses a diversity of habitats. One of many species known to occur on the property is Roosevelt Elk.

The Dunn's have sustainably harvested timber for generations and continue to do so. Rangelands on the Diamond D Ranch support an organic, grass-fed beef cattle operation. Trenton has taken over as owner-operator of the ranch and is working with a variety of natural resource professionals to implement new conservation practices, including oak woodlands restoration and road upgrades that will reduce the potential for erosion and sedimentation of streams.

Keeping individual properties like the Diamond D Ranch intact, and maintaining a chain of capable young owner-operators is essential to maintaining the region's family ranching heritage. This heritage includes the stewardship of

natural resources, scenic open spaces, and economic activities on which our communities depend. NRLT is honored to help

advance this legacy by partnering with the Dunn's on their Diamond D Ranch conservation easement project.



# Together For the Land!

Our community's generosity and care for the land is truly inspiring – something that was beautifully demonstrated at this year's Annual Celebration on October 10th. This gathering, also known as "Boots and Birkenstocks", has become well known for bringing together an incredibly diverse crowd for a fun filled night of music, locally produced food, and a lively silent and live auction.

In a time where many people focus on differences and what separates us, it is refreshing to take part in an event that celebrates our commonalities and what brings us together. For us, this thread is the land, our love for it and our dependence on it. This theme could be seen in the unique auction items: farm to table meals, fishing, hunting and sailing excursions, trips and horseback rides on private ranches, farm shares, locally harvested meat and firewood, hiking and sea level rise tours, local landscape art and getaways to the great outdoors.

The Northcoast Regional Land Trust would like to thank and acknowledge our incredibly generous supporters – the farmers, producers, landowners, businesses, board members, advisors, staff, volunteer organizations and various individuals who helped make this event come to life. Because of everyone who contributed, we were able

to raise more than \$65,000. More importantly, people came together to celebrate the heart of what we do: protect wild and working land for you and your family.

We'd also like to thank our event sponsors: Humboldt Redwood Company/Mendocino Redwood Company, North Coast Co-op, Pierson Building Center, Pacific Watershed Associates, Stillwater Sciences, American AgCredit, Emerald City Laundry, The Land Man, Morgan Stanley, Baldwin, Blomstrom, Wilkinson & Associates, Manhard Consulting, Ramone's Bakery and Café, Redwood Capital Bank, The Shaw Group, Wildberries Marketplace, Coast Central Credit Union, Conservation Partners, GreenWay Partners, Humboldt Grassfed Beef, Alexandre Family EcoDairy Farms, Clendenen's Cider Works, Ferndale Farms, Los Bagels and Frederick and Katherine Morehouse.



Board members Lee Mora, Martha Spencer and Dennis Rael



Stillwater Science employees celebrating Photos: Lance Drill

**SAVE THE DATE! NRLT Annual Celebration  
Saturday, October 8, 2016, River Lodge, Fortuna**

### Thanks to event supporters & volunteers

*Additional thanks to our Barn Raising donors & auction winners (p.7)*

Alan Sanborn  
Aldaron Laird  
Alexandre Family EcoDairy Farms  
Alexandre Kids  
Almquist Lumber  
American AgCredit  
Ann King Smith  
Annie Bolick-Floss  
Arcata School of Massage  
Arcata Scoop  
Arnold King  
Baldwin, Blomstrom, Wilkinson & Assoc.  
Barbara Groom  
Baroni Designs  
Baywood Golf and Country Club  
Brad Smith  
Bramble and the Rose  
Brandon Barnwell  
Brick & Fire  
Brio Breadworks  
Bruce Johnson  
Bubbles  
CA Conservation Corps  
Café Brio  
Caravan of Dreams  
Cater House Inns & Restaurant 301

Center Arts  
Christine Barkdull  
Chumayo Spa  
Clendenen's Cider Works  
Coast Central Credit Union  
Coast Seafoods Co.  
Connie Low  
Conservation Partners  
Corin & Sarah Pilkington  
Crush  
Cypress Grove Chevre  
Dandelion Herbal Center  
David Imper  
David McMurray  
DeepSeeded Community Farm  
Dennis Rael & Carol Falkenthal  
Dick Taylor Craft Chocolate  
Doris & Daughter Catering Co.  
Duncan McNeil  
Emerald City Laundry  
Erica Grey  
Eureka Payments  
Ferndale Farms  
Fieldbrook Family Market  
Finnish Country Sauna & Tubs  
Flora Organica  
Flora Organica Designs  
Fred Neighbor  
Garden Gate  
Gary & Jan Flosi  
Gary Friedrichson  
Greg Blomstrom

Hair Unlimited  
Happy Butchers  
Harry Blumenthal  
HealthSPORT  
Henry's Olives  
Historic Benbow Inn  
Holly Yashi  
HSU Volunteers  
Humboldt Auction Yard  
Humboldt Bay Rowing Assoc.  
Humboldt Co. Sheriff's Office  
Humboldt Distillery  
Humboldt Grassfed Beef  
Humboldt Redwood Company  
Indigo Dog House  
J & W Liquor  
Jack & Shore McLeod  
Jen Kait  
Jerry Lema  
Josh Crowe  
Katherine & Frederick Morehouse  
Kathy O'Leary  
Katy Yanke  
Keith McCloghrie  
Kellogg Garden Products  
Kerry McNamee  
Kinetic Coffee

Kneeland 4-H  
Kneeland Glen Farmstand  
Kokarat  
Korobi Stables  
Kristen Girard-Magnuson  
Lambda Theta Alpha Latin Sorority  
Lance Drill Photography  
Lee & Eileen Mora  
Leslie Scopes Anderson  
Lisa Landis  
Lisa Marie Waters  
Liscom Hill Pottery Works  
Little River Farm  
Living Quarters  
Los Bagels  
Lost Coast Brewery  
Lost Whale Inn  
Mad River Brewing Company  
Mandy & Mark Marquez  
Manhard Consulting  
Mark & Dina Moore  
Mark Cortright  
Mark Noyes  
Martha Spencer  
Maureen McGarry  
Maya Conrad  
McIntosh Family Farm  
McKenzie Riverside Cottages  
Melanie Barnett  
Melanie Getman  
Mendocino Forest Products  
Mike & Jane Cipa

Mike Anderson  
Mission Linens  
Morgan Stanley  
Nancy Stevens  
Natural Decadence  
Neukom Family Farm  
North Coast Co-op  
North Coast Events & Rentals  
Northtown Books  
Oregon Shakespeare Festival  
Organic Matters Ranch  
Pacific Watershed Associates  
Pearce Ceramics  
Peggy Loudon  
Peter Bussman  
Peter Jermyn  
Pierce Family Farm  
Pierson Building Center  
Plaza Grill  
Plaza: Be Inspired  
Rain Frog Farm  
Ramone's Bakery and Café  
Redwood Capital Bank  
Redwood Curtain Theatre  
Redwood Empire Golf  
Rees Hughes  
Renee Crowley  
Revolution Bicycle Repair  
Rick Slack  
Ripple Creek Cabins  
River Lodge

Rob Parks  
Rob Thompson  
Rollie Lamberson  
Rotoact  
Rumiano Cheese Company  
Schorr Berman  
Seth Magnuson  
Seth Magnuson's Infinite Design  
Shakefork Community Farm  
Shayne & Lindsay Green  
Sirens Song Tavern  
Soul to Soul Spa & Foot Bar  
Stargazer Barn  
Stephen Rice  
Steven & Carol Vander Meer  
Stillwater Sciences  
Stock Schlueter  
The Land Man  
The Requa Inn  
The Shaw Group  
Thomas Allen Bethune  
Tim & Jackie Pricer  
Tom & Nancy Bessette  
Tom Benzing  
Tom Norman  
Trinidad Bay Charters  
Warren Creek Farms  
Wildberries Marketplace  
Willow Creek Farms  
Yvonne Everett  
Zuretti & Brenda Goosby



**CHRIS BELL**  
Appraisal Associates

Aldaron Laird

The Harland Law Firm LLP



# THANK YOU NRLT Members and Supporters!

The Northcoast Regional Land Trust is forever grateful to the following who gave cash grants, donations or support from October 16, 2014 through October 15, 2015.

*The Northcoast Regional Land Trust is a tax-exempt, nonprofit, 501(c)(3) organization listed with the Internal Revenue Service under EIN #68-0456290. All donations are tax deductible.*

## Agencies & Foundations

CA Council of Land Trusts  
 CA Department of Fish and Wildlife  
 CA Department of Water Resources  
 CALFIRE  
 CA Native Plant Society – North Coast Chapter  
 CA Natural Resources Agency  
 CA Northern Region Council of Land Trusts  
 CA State Coastal Conservancy  
 CA Wildlife Conservation Board  
 City of Eureka  
 Clif Bar Family Foundation  
 Community Alliance for Family Farmers  
 Friends of the Dunes  
 Humboldt Area Foundation  
 Humboldt County  
 James Talcott Fund  
 Land Trust Alliance  
 Luckens/McAdams Foundation  
 Marisa Foundation  
 McLean Foundation  
 Natural Resources Conservation Service  
 New Belgium Brewing Company  
 NOAA Fisheries  
 Norcross Wildlife Foundation, Inc.  
 Northern California Association of Nonprofits  
 RCAA Natural Resources Services  
 Redwood Region Audubon Society  
 S.D. Bechtel, Jr. Foundation  
 T.S. & K.D. Glide Foundation  
 U.S. Bank  
 U.S. Fish & Wildlife Service  
 U.S. Forest Service, Forest Legacy Program  
 Yager/Van Duzen Environmental Stewards

## Active Lifetime Members

*A special thanks to these members who have continued to sustain NRLT. See a full list of Lifetime Members at: [nrlt.org/partners](http://nrlt.org/partners).*

Blake & Stephanie Alexandre  
 Gary & Lynn Baker  
 Gloria Barnwell  
 Les & Janet Barnwell  
 Barbara Barratt  
 Bob Battagin & Deborah Fitzpatrick  
 Schorr Berman  
 Joan Berman  
 Greg Blomstrom & Debra Harrison  
 Harry Blumenthal & Scott Mitchell  
 Bill Bragg & Lee Roscoe-Bragg  
 Ross Burgess  
 Francis & Carole Carrington  
 Maya Conrad  
 Renee Crowley  
 Stephen & Sharon Davies  
 Stan & Judy Dixon  
 Yvonne Everett & Judge Mayer  
 Julie Fulkerson & Lynn Evans  
 Lindsay & Shayne Green  
 Jill & Steve Hackett  
 Danny Hagans  
 Richard & Nancy Head  
 Judith Hinman  
 David & Heidi Hodges  
 Annette & Greg Holland  
 Rees Hughes & Amy Uyeki  
 Harvey & James Kelsey  
 Ann King Smith  
 Roland Lamberson & Michele Olsen  
 Tom Lisle & Lori Dengler  
 David & Madeline McMurray  
 Steve Miller & Yvonne Schell  
 Lee & Eileen Mora  
 Fred Neighbor & Joyce Hough Neighbor  
 Margaret Nulsen & Chris Frolicking  
 Felicia Oldfather  
 Rob & Zhao Parks  
 Tim & Jackie Pricer  
 Dennis Rael & Carol Falkenthal  
 Jeff & Edith Schwartz  
 Rondal Snodgrass  
 Martha Ann Spencer & Eric Nelson

Francis Sweet  
 Bill Thompson  
 Ronald & Donna Thompson  
 John & Nancy VanSpeybroeck  
 Marty & Dan Vega  
 Mock Wahlund  
 Lynne Zeleny

## Steward's Circle

*A special thanks our monthly donors. To sign up go to: [nrlt.org/Stewardscircle](http://nrlt.org/Stewardscircle).*

Harry Blumenthal & Scott Mitchell  
 Laura & Bob Chapman  
 Jim Clark  
 Gail Coonen  
 Renee Crowley  
 Rees Hughes & Amy Uyeki  
 Peter Jackson  
 Ann King Smith  
 Lee Koffler  
 Roland Lamberson & Michele Olsen  
 David & Madeline McMurray  
 Susan Moskaly  
 Chris & Sheila Rocker Heppie  
 Martha Ann Spencer & Eric Nelson

## Redwood (\$1000+)

Anonymous (1)  
 Ardene Janssen  
 Sarah Mora  
 Frederick & Katherine Morehouse

## Big Leaf Maple (\$500-\$999)

Anonymous (2)  
 Tom & Nancy Bessette  
 Carolyn Bugenig  
 James & Pamela Cipra  
 Michael & Jane Cipra  
 Mike & Cindy Jeffress  
 Mark & Dina Moore  
 George & Mary Schmidbauer

## Black Oak (\$250-\$499)

Anonymous (1)  
 John Bernstein  
 Bud & Randi Burke  
 Xiaozhen Chen  
 Corrine Frugoni  
 Scott & Sandi Hunt  
 Erik Jansson  
 Laurie Montero  
 Sean & Kathy O'Day  
 Shawna & Quentin Owsley

## Madrone (\$100-\$249)

Anonymous (5)  
 Steven Allen  
 Catherine & Thomas Allen  
 Ann Alter & Betsy Watson  
 Mark Andre & Nancy Rehg  
 Tom & Jackie Benzinger  
 Heidi & Bill Bourne  
 Greg Bundros & Teri Huber-Bundros  
 Charlie Butterworth  
 Nancy Chase  
 Nancy Correll & Richard Duning  
 Greg & Sandy Dale  
 Nancy Dean  
 James Derden & Judith Little  
 Adam Dick  
 Joan Early  
 Jud Ellinwood & Anda Webb  
 Marjorie Fay  
 Michele Fell-Casale & Carl Casale  
 Gary & Jan Flosi  
 Susan Frances & Ken Yanosko  
 Gary & Janis Friedrichsen  
 Don & Sylvia Garlick  
 Darrell Gillette  
 Claire & Andy Girard  
 Kay & Garry Green  
 Dick Hansis  
 Carla Hayes

Lisa Hoover  
 Chris & Lisa Howard  
 Bill & Lynda Hutton  
 Harvey Kelsey & Susan Cashman  
 Melissa & Todd Kraemer  
 Richard LaForge  
 Kathy Layton  
 Tom & Susan Leroy  
 Judith & John Longshore  
 Kim & Barbara Lucas  
 Seth & Kristen Magnuson  
 Debbie Marshall  
 Claire McAdams  
 Chris McAuliffe  
 Lauren McClure  
 Diane Sutherland Montoya  
 Rusty & Alverna Moore  
 Wes Moore & Leslie Cottrell Moore  
 Jim & Gay Morrison  
 Archie & Sue Mossman  
 Aaron Newman  
 Denise Newman & Mitch Block  
 Cynthia & Earl Noel  
 Janice Parakilas & Roy Baker  
 Burt & Cynthia Rees  
 Chris & Sheila Rocker Heppie  
 Terry & Erica Roelofs  
 Jerry & Gisela Rohde  
 Jay & Jackie Russ  
 Bob Schultz  
 Suzanne Simpson & Lew Litzky  
 Emily Sinkhorn  
 Bob Sizoo & Sue Turner  
 Howard & Rebecca Stauffer  
 Jason & Emily Teraoka  
 Steven & Carol Vander Meer  
 Bob & Justin Walker  
 Mike Wallace  
 James & Virginia Waters

## Manzanita (up to \$99)

*We graciously thank our donors that gave up to \$99. For a full list visit: [nrlt.org/partners](http://nrlt.org/partners).*

## In-Kind Donations

*Doesn't include Annual Celebration (see p.6)*

Aldaron Laird  
 Alquist Lumber Company  
 B & B Portable Toilets  
 Bob Battagin & Deborah Fitzpatrick  
 Baywood Country Club  
 Bug Press  
 CA Native Plant Society  
 Don Allan  
 Kathy Mullen  
 Leslie Scopes Anderson  
 Los Bagels  
 Marlon Gil  
 Northcoast Cleaning Services, Inc.  
 Pierson Building Center  
 Precision Intermedia  
 Tom Gill

## In Memory Of

*Mrs. Pauline Donahue:* Karen Brown-Stockton  
*Kevin Ebbert:* Erik Jansson  
*Brian Hunt:* Scott & Sandi Hunt  
*C.J. Hindley:* Anonymous  
*Brian L. King:* Arnold King  
*Aldaron & Christy Laird, Riley & Kathy Quarles, the Hosterman Family, Randy, Mary & Christina Klein, Dave Mulhern:* Anonymous  
*Kelly R. McAdams:* Claire McAdams  
*Randy W. Moore:* Rusty & Alverna Moore  
*Susan Parks:* Rob Parks  
*Doug Smith:* Bob Battagin & Deborah Fitzpatrick  
*Edith & John Stokes:* Frederick & Katherine Morehouse

## Our Business Partners

**Make our community strong. Please support the following businesses.**

*Does not include Annual Celebration donors. (See page 6)*

A.M. Baird Engineering & Surveying  
 Able Forestry Consulting  
 Aldaron Laird Consulting, Trinity Associates  
 Alexandre Family EcoDairy Farms  
 Alquist Lumber Company  
 American AgCredit  
 Arcata Scoop  
 Arcata Scrap & Salvage  
 Azure Bay Psychotherapy  
 Baldwin, Blomstrom, Wilkinson & Associates  
 Baywood Golf & Country Club  
 Bear River Band of the Rohnerville Rancheria  
 Bug Press  
 Charlie & Kyla Tripodi, Coldwell Banker Cutten Realty  
 Chris Bell Appraisal Associates  
 Clendenen's Cider Works  
 Coast Central Credit Union  
 Conservation Partners, Ellen Fred  
 Deep Seeded Community Farm  
 Dorris & Daughters Inc.  
 Emerald City Laundry Company  
 Ferndale Farms  
 GHD Inc.  
 GreenWay Partners  
 Hansen & Pereira Professional Fiduciaries  
 Harland Law Firm, LLP  
 Hohman & Associates Forestry Consultants  
 Hooven & Co., Inc.  
 Humboldt Association of Realtors  
 Humboldt Auction Yard  
 Humboldt Grassfed Beef  
 Humboldt Land Title Company  
 Humboldt Redwood Company  
 Hunter, Hunter & Hunt, LLP  
 Hussey Financial Consulting Group, Wells Fargo Advisors  
 Jaime Walling CPA & Associates  
 Jason J. Eads, Attorney at Law  
 Jitter Bean Coffee  
 Lone Star Ranch  
 Los Bagels  
 Mad River Brewing Company  
 Manhard Consulting LTF  
 Maya Conrad, EcoBroker, Coldwell Banker Sellers Realty  
 Modocino Forest Products  
 Michael Love & Associates, Inc.  
 Mock Wahlund, Coldwell Banker Cutten Realty  
 North Coast Cleaning Services, Inc.  
 North Coast Co-op  
 Pacific Watershed Associates  
 Pierson Building Center  
 Precision Intermedia  
 Ramone's Bakery & Cafe  
 Redwood Capital Bank  
 Redwood Curtain Brewing Company  
 Renata's Creperie  
 Roy E. Corsetti, CPA  
 Sequoia Orchids & Redwoods  
 Solutions  
 Soul to Soul Spa & Foot Bar  
 Stillwater Sciences  
 The Historic Regua Inn  
 The Shaw Group  
 Umpqua Bank  
 U.S. Bank  
 Wildberries Marketplace

*Cynthia Van Vleck:* Carolyn Bugenig, Mike & Cindy Jeffress  
*Lucille Vinyard:* Jerry & Gisela Rohde

## In Honor Of

*Greg Blomstrom & Ann King Smith:* Corrine Frugoni  
*Heidi Bourne:* Kathleen Stroup  
*Carolyn Bugenig:* Lindsay & Shayne Green  
*Bud Burke:* Diane Sutherland Montoya  
*Xiaozhen Chen:* Cynthia & Earl Noel  
*Cameron, Sean and Ryan Connor:* Alyson Hunter  
*Lindsay & Shayne Green and Seth & Kristen Magnuson:* Cindy & Mike Jeffress  
*Neal Maine:* Nancy Chase  
*Dylan Mattole:* Anonymous  
*David & Madeline McMurray:* Carrie Grant & Rondal Snodgrass  
*Larry McMurray:* David & Madeline McMurray



**Bug Press**  
 COMMERCIAL PRINTING  
 D E S I G N  
 T Y P E S E T T I N G





**NORTHCOAST REGIONAL LAND TRUST**  
 P.O. Box 398  
 Bayside, CA 95524

NONPROFIT ORG  
 US POSTAGE  
 PAID  
 Eureka, CA  
 Permit No. 46



## CALENDAR OF EVENTS

**Land Trust Holiday Party:** *Friday, December 11, 4-7 pm, NRLT Office.* Join landowners, conservation specialists, board members, advisors, staff and our members as we celebrate the holidays.

**NRLT OLLIE Course – Lay of the Land:** *Tuesday, April 19 & 26, 3-5 pm, Humboldt Bay Aquatic Center & FWFR and Saturday, May 7, 9-5 pm, Fieldtrip.* Learn about the preservation of wild and working lands in Humboldt County with this multi-day course, including field trips. \$80 for OLLIE members.

**Freshwater Farms Reserve Nature Trail Grand Opening:** *Sunday, May 1, 1-5 pm.* Includes the opening of the nature trail, a barn raising, plein air art event, potluck and live music. FREE.

**Pints for Non-Profits:** *Wednesday, May 18, 1-9 pm, Mad River Brewing Co.* Come have a beer with NRLT supporters for conservation. \$1 of each beer sale goes to NRLT. Food, live music.

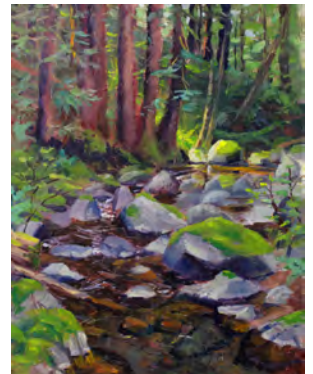
**Freshwater Farms Interpretive Walks:** *Visit [nrlt.org](http://nrlt.org) for Spring dates.* Each walk features a guest speaker.

**Canoe-the-Slough:** *Visit [nrlt.org](http://nrlt.org) for Spring dates* Paddle Humboldt Bay and Freshwater Slough with NRLT.

**NRLT's Mission** *The Northcoast Regional Land Trust is dedicated to the protection and economic viability of working landscapes, farms, forests and grazing lands, and to the preservation and protection of land for its natural, educational, scenic and historic values. We work with landowners on a voluntary basis to promote stewardship of Northern California's healthy and productive resource base, natural systems and quality of life.*

## COVER ARTIST – LEO STAFSNES

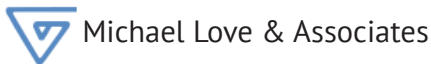
I am a young artist currently attending Arcata High School. Always dreaming and drawing as a child, I have pulled together a special blend of technical expertise from some of the North Coast's top artists with ideas spanning across my sixteen years of memories and ambitions. I work in a wide range of subject matter and mediums including painting, drawing, illustration, and film.



*Upstream*

Contact: [lstafsn@gmail.com](mailto:lstafsn@gmail.com)

*Special Thanks to these sponsors for underwriting this issue:*



*Belonging Never Felt Better*

