

SPRING 2013

# NORTHCOAST REGIONAL LAND TRUST



*Freshwater No.2*

*Madeline McMurray*

## The Freshwater Farms Reserve Dream

Own-  
ing land has never been a long term goal of the North-coast Regional Land Trust. When NRLT purchased a 54-acre parcel hemmed in between Myrtle Avenue and the Freshwater Creek Slough in 2005, the primary impetus was to help local partners restore a tidewater refuge for juvenile salmon in the lower watershed. However, the property quickly took on a greater significance for board and staff members charged with its stewardship. Jointly managing this expanse of bot-tomland has cultivated an understanding of each other and helped to flesh out and define NRLT's collective "sense of place," particularly in the coastal plains around Humboldt Bay. Freshwater Farms Reserve has become a working ground to discover what we stand for as individuals and as an

organization working together on behalf of the land.

Viewing management as a microcosm of our own diverse values, we have labored to enhance the multiple benefits the property can produce for our community and soci-ety. Working with partners and the gener-ous support of donors, we have restored fish habitat and rehabilitated productive pastureland. We have created recreational opportunities (such as canoeing the slough) and made the property a learning ground for local schoolchildren. We have turned the reserve into a natural laboratory for aspiring scientists from local high schools and colleges, while offering resource profes-sionals opportunities to observe and learn from this dynamic restoration project. Now we hope to do more.

*Continued on page 4*

### IN THIS ISSUE

From the Executive Director	2
Land Conservation around the World	3
Donor Voices	3
CA Northern Region Conference	3
Managing for Multiple Benefits	4-5
Annual Report	6
NRLT Supporters	7
Calendar of Events	8
About the Artist	8

## Board of Directors

**President, Martha Spencer**, Supervising Planner, Humboldt Co. Planning Div.  
**1st Vice President, Dennis Rael**, Business Owner, Los Bagels Company, Inc.  
**2nd Vice President, Leland Mora**, Business Owner, Humboldt Auction Yard & Humboldt Grassfed Beef  
**Secretary, Jill Hackett**, Business Owner, Ferndale Farms  
**Treasurer, Blake Alexandre**, Business Owner, Alexandre Family EcoDairy Farms  
**Greg Blomstrom**, Forester, Baldwin, Blomstrom, Wilkinson & Assoc.  
**Bill Bragg**, Attorney at Law, Zwerdling, Bragg & Mainzer, LLP  
**Andy Elsbree**, Division Analyst, Green Diamond Resource Company  
**Yvonne Everett**, Professor, Natural Resources Planning, Humboldt State University  
**Rees Hughes**, Retired University Admin., Humboldt State University  
**Mandy Marquez**, Business Banking Officer, US Bank  
**Susan Marshall**, Professor, Wildland Soils, Humboldt State University  
**Fred Neighbor**, Attorney at Law, Private Practice  
**Aaron Newman**, Commercial Fisherman, F/V Maria Isabel

## Board of Advisors

James Able	Aldaron Laird
Mark Andre	Rollie Lamberson
Heidi Bourne	David McMurray
Maya Conrad	Dina Moore
Melanie Cunningham	Colleen O'Sullivan
Jeff Dunk	Chuck Powell
Zuretti Goosby	Rondal Snodgrass
Annette Holland	Eddie Tanner
Ann King Smith	

## Staff

**Lindsay Green**, Executive Director  
**Shayne Green**, Projects & Stewardship  
**Debbie Marshall**, Admin. Assistant  
**Sarah Pilkington**, Outreach & Development

**Clara Cross**, Project Consultant

### Volunteer

Leslie Scopes Anderson, Newsletter Layout

*The Northcoast Regional Land Trust is a member of the Land Trust Alliance, the California Council of Land Trusts, and the CA Northern Region Land Trust Council*

Newsletter published by NRLT twice a year  
 P.O. Box 398, Bayside, CA 95524  
 Phone: 707.822.2242; Fax: 707.822.5210  
 info@nrlt.org; www.nrlt.org

## From the Executive Director

This spring we celebrate our 13th year at the Northcoast Regional Land Trust. In this short time NRLT has worked with our partners to conserve over 25,000 acres of working ranchlands and timberlands; a vast and beautiful expanse of open space that will benefit us all for many generations to come. 25,000 acres!

This work requires "all hands on deck", and these projects can take years to complete. I credit much of this success to the caliber of people among our partners and within NRLT. We have a busy little shop of three-and-a-half (amazing) staff, with an organizational budget of less than \$400,000. With you, our partners and supporters, we are a passionate group, dedicated, and, (dare I say,) tenacious. Great things can be accomplished with a team like ours!

We are very lucky to have such courageous landowners willing to explore perpetual conservation options on their properties. We rely on our partners to help us pull these complicated projects together, and we rely on our supporters to help us finance the early stages of a project and to meet gaps in financing that would otherwise stall an important conservation opportunity.

A special thanks to one member of the NRLT-team: Leland Mora. Lee recently finished his two-year term as Board President of NRLT. Through much patience and integrity, Lee has taught me enormously about the complexities of our resource economies and the inextricable link between economy and open space. Thank you, Lee; I look forward to continuing to learn from you in your role as a board member, and as a friend.

I am thrilled to begin working with our new Board President, Martha Spencer. Currently a Humboldt County Planner, Martha's enthusiasm, critical mind and skills at moderating difficult conversation will help NRLT continue to thrive. Welcome Martha! Welcome also to new board member Aaron Newman. Aaron is a local commercial fisherman, active in the community and currently serving on the Humboldt Bay Harbor Commission (among many things). We are lucky to have his expertise!

In my nearly six years with NRLT, it has been my privilege to work with the landowners who have voluntarily decided to take the leap and to protect their lands, forever. Your support as a landowner, a partner, a member, and as an advocate for this work in our community remains absolutely critical to the success of land conservation in our region.

I look forward to continuing to work with you as we juggle owning our three fee properties, initiate new conservation easement projects, and advocate for voluntary incentive-based programs that support land stewardship. I know how much we all care about this place and the character of our communities; we each have a role to play to ensure they continue to be as vibrant tomorrow as they are today.

We thank you for your support. We most certainly couldn't do this alone!

*Lindsay Green*

Lindsay Green



**NRLT Board President,  
Martha Spencer**



**Welcome Aaron!**

# Land Conservation around the World: Australian Landcare Visit

By Yvonne Everett, Professor, Natural Resources Planning, HSU

Just got back from a month long trip visiting land managers in Victoria, Australia to learn about “Landcare”, a national movement focused on supporting groups of landholders who voluntarily work together on land degradation problems to address the triple goal of enhancing incomes, strengthening community relations and promoting environmental conservation.

Working lands stewardship is a constant challenge. Among the toughest issues are those that go across property boundaries and affect the landscape as a whole. In Australia these include salinization, drought, soil-erosion, pest control, water resource conservation and wildlife corridors. A landholder may apply best practices but

fail to improve a landscape-scale problem because other managers are not addressing it adequately.

In Landcare, local land managers with support from government paid facilitators and technical experts work in groups to develop plans to address locally identified issues. Then they and other community volunteers work together to fix the problem. On an appointed day everyone, from tens to hundreds of people depending on the project and location, shows up to plant trees or hunt down rabbits (a major problem for ranchers in Australia). Whatever the task may be, people come together to get work done and celebrate at the end of the day with a BBQ. A month or two later, a different landowner will have an

opportunity to host their own event to meet their management and conservation goals. Thousands of miles of fences, millions of trees and growing friendships later, there are noticeable improvements on the land and in many communities.

Perhaps here in Northern California we can glean ideas from this approach to help solve some of our cross boundary issues including controlling sudden oak death, managing deer herds or reducing fuels for wildfire management. Effective collaboration is a huge part of NRLT’s work and this model could potentially benefit landowners, wildlife and the community at large.

For more information see the Landcare Australia Ltd. website at [www.landcareonline.com](http://www.landcareonline.com).



Photo by Yvonne Everett



Photo Source: [www.landcarevic.net.au](http://www.landcarevic.net.au)



## California Northern Region Land Trust Council Conference 2013

*Farms, Fish, and Forests: Connecting Land and People for Future Generations*



**June 27 & 28,  
River Lodge, Fortuna, CA**

Our region is a hub for biodiversity and agricultural productivity, as well as creative approaches to land and water conservation. This two day conference will explore the innovative strategies and voluntary tools that land trusts are using to ensure that prosperity and development are balanced with open space and wilderness, while also celebrating our connection with the land through storytelling, film, poetry, and music. For more information or to register, contact Debbie at [d.marshall@ncrlt.org](mailto:d.marshall@ncrlt.org).

## Donor Voices: Tim and Jacquelyn Pricer, Doris Fearrien

Charles Mountain Ranch Landowners

Jackie and I have been living on and running the ranch for around 17 years. From the very start we realized we had something special and needed to find a way to keep it special. We’ve seen properties all over the county get subdivided and developed, taken out of meaningful agricultural production. Many times wildlife suffers from this process. When we got involved with the Northcoast Regional Land Trust we were looking for a way to save our ranch from ever being split up. They stepped up and did an amazing job to help us achieve our goals. Knowing that their mission is to preserve working landscapes here on the North Coast, we will continue supporting them into the future.

THANKS TO OUR SPONSORS:



Jason M. Garlick  
Attorney at Law



CHRIS BELL, MAI  
Appraisal Associates

# MANAGING FOR MULTIPLE BENEFITS:

## Continued from page 1

Last year's addition of 20 adjacent acres has joined two parcels making up a historic 74-acre farm. The expansion of the reserve presents new possibilities and has energized efforts to make this special place even more beautiful, diverse, productive, and useful to people and wildlife.

NRLT and many supportive community partners are currently working on a variety of projects while collectively creating a vision to transform this former dairy (and more recently a nursery) into a model of compatible uses.

## Developing a nature trail

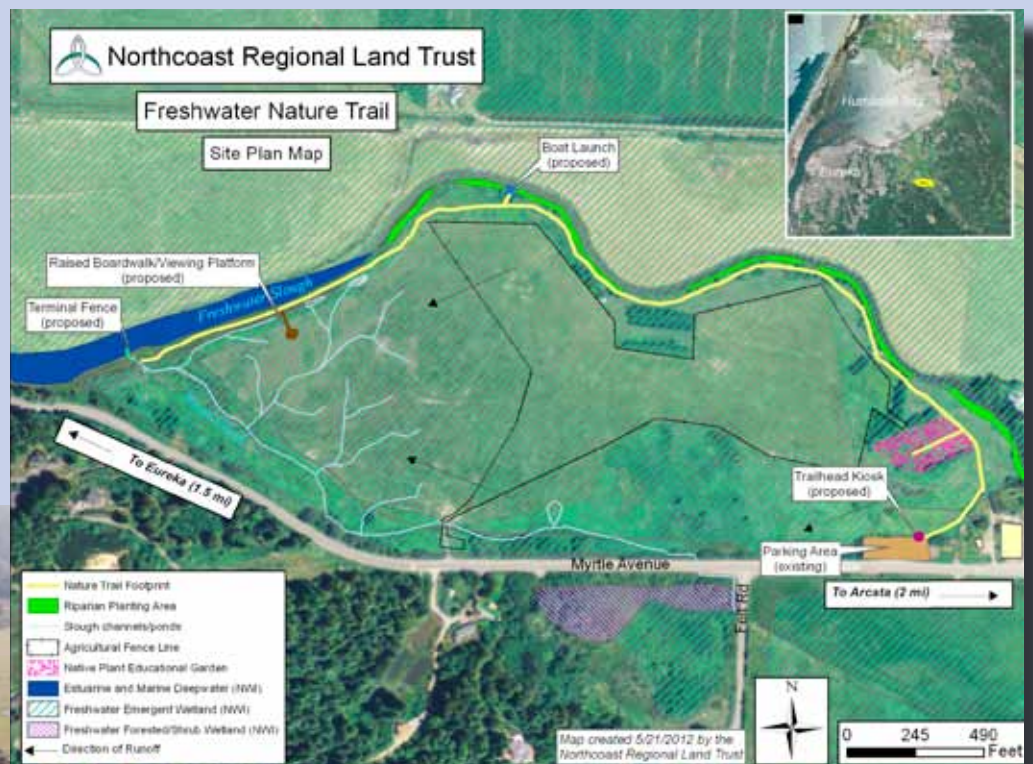
We have planned (with much help from our neighbors at Redwood Community Action Agency) and are now permitting trail improvements that would increase the accessibility of the property for recreationists and school groups. Planned improvements include a designated parking area, interpretive signs, a boat launch, and a viewing platform. A special thanks to our primary funding partners: CA State Coastal Conservancy, Pacific Coast Joint Venture and the Humboldt Bay Recreation Enhancement and Water Quality Fund (HAF).

## Improving rangelands

NRLT and its lessee continue developing infrastructure and implementing grazing practices to increase pastureland productivity. Livestock will increasingly be used to shape vegetation patterns in ways that support other uses of the property.

## Planning another round of restoration on Wood Creek

NRLT is working with agency partners to design a second phase of the Wood Creek restoration project. Early conceptual designs will explore constructing new ponds, extending historic stream channels, increasing fish access to upstream reaches, establishing riparian forest stands, and alleviating undesired winter-time flooding.



*Freshwater Farms Reserve  
post restoration 2009*

# THE FRESHWATER FARMS RESERVE

## Many Hands at Work

One rainy Saturday last December, a group of NRLT staff, board members, volunteers, and California Conservation Corps members gathered to remove tons (literally) of garbage and assorted junk that had filled up the barn and adjacent buildings over the years. In one day we hauled 7½ tons of garbage to the dump, piled a mountain of metal for recycling at the scrap yard, incinerated a seemingly endless stream of organic burnables, salvaged items of apparent value, and recycled other materials. At day's end, indoor areas had been transformed from dumping grounds to blank slates of possibility. We extend our deep thanks to the many volunteers and especially the 16 CCC members who labored hard to make this first-of-many clean-up days a huge success!



*CCC member, Lorin Daly and NRLT Board member Lee Mora hard at work*

## Barn Renovation

Nothing tells a story quite like an old barn. We are hoping to save the turn-of-the-century barn that sits on the property, which has fallen into disrepair in recent decades. The building needs to be weatherized and stabilized. We are working with College of the Redwoods, contractors, and local farmers to evaluate options.



*Freshwater Farms barn 2012*

## Exploring the Possibility of an Onsite NRLT Office

NRLT is exploring the feasibility of turning the old milking barn (more recently used as a nursery facility) into its future office, perhaps doubling as an educational facility focused on agriculture and wetlands. While many logistical and regulatory challenges exist, this site has a lot of appeal as a future home for the land trust and the important work NRLT does in the region.

## You Can Help! Freshwater Farms Reserve Wish List

You can become a part of bringing this amazing property to its full potential! Below is a list of what we need to get started:

- shipping container
- rider/tractor mower
- lawn mower
- brush mower
- gas weed eaters
- chainsaw
- wheelbarrows
- hand pruners
- sledge hammers
- shovels
- complete tool kit

To donate any of the above items (or to make a cash donation) please contact Shayne at [s.green@ncrlt.org](mailto:s.green@ncrlt.org).



*The dairy at Freshwater Farms circa 1969*

# ANNUAL REPORT 2012

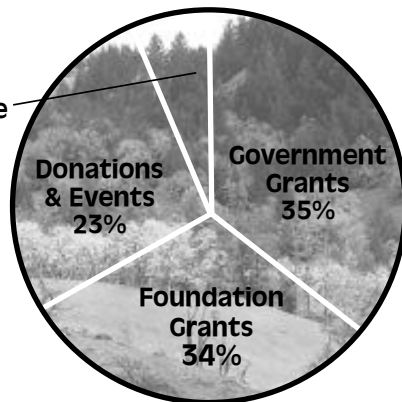
The Northcoast Regional Land Trust is pleased to provide our members with an accounting of organizational and programmatic accomplishments for 2012:

- Together, we reached 25,000 acres conserved through conservation easements, protecting 1,500 acres of riparian habitat, 60 miles of streams, 17,000 acres of forestland, 2,300 acres of oak woodlands, and 7,200 acres of grass/rangelands.
- In April, the 1,622 acre Miller Forest property conservation easement was completed, permanently protecting over 350 acres of endangered Port Orford Cedar reserves. In September, Charles Mountain and Chalk Mountain Phase II conservation easements closed, conserving over 15,000 acres of working landscapes forever!
- We acquired the 20-acre Freshwater Nursery property, reuniting it with the adjacent 54-acre Freshwater Farms Reserve, to protect the wetland habitat and agricultural productivity.

- Through partnerships, we took over 1,000 students out on the land with our Farm to School, Cows and Cattails and Biological Monitoring programs.
- We continued strong regional collaborations by acting as the fiscal sponsor for the CA Northern Region Land Trust Council and helping to coordinate restoration projects with the Yager/Van Duzen Environmental Stewards.
- With many partners, we facilitated an effort that led to the Humboldt County Board of Supervisors passing an Oak Woodlands Resolution and Management Plan enabling landowners' access to new funding for oak woodland restoration and conservation.
- Thanks to your help, our fundraising efforts were a great success! We raised nearly \$90,000, with \$20,000 coming from an exciting matching campaign at our Annual Celebration.

## INCOME

Other Income  
8%

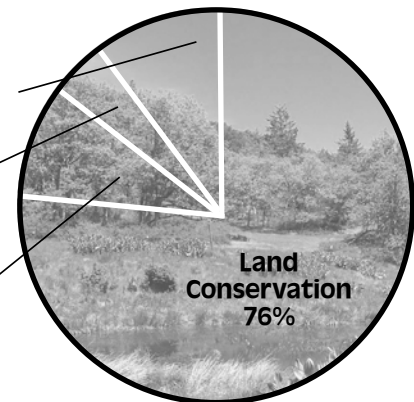


## EXPENSES

Operational\*\*  
11%

Conservation  
Planning  
4%

Education  
& Outreach  
9%



## INCOME

2011

2012

Government Grants	\$153,175	\$131,870
Foundation Grants	\$36,259	\$130,164
Donations & Events	\$60,239	\$89,664
Other Income	\$13,690	\$30,785
Restricted Donations*	\$61,484	\$286,753
Investments	-\$70,960	\$75,784
<b>TOTAL</b>	<b>\$253,887</b>	<b>\$745,020</b>

\*Restricted donations are made to our Stewardship or Board Designated funds which allows for the ongoing monitoring and stewardship of our easement properties and continuation of our work.

## EXPENSES

2011

2012

Land Conservation	\$280,961	\$280,769
Education & Outreach	\$22,690	\$32,158
Conservation Planning	\$16,183	\$15,363
Operational**	\$24,849	\$39,323
<b>TOTAL</b>	<b>\$344,683</b>	<b>\$367,613</b>

\*\*Includes administration, fundraising, staff development & board expenses.

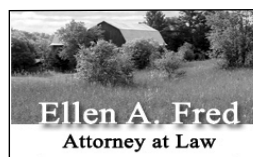
## THANKS TO OUR SPONSORS:



The Harland Law Firm LLP



**Aldaron Laird**  
Environmental  
Planner



**HUSSEY**  
FINANCIAL CONSULTING GROUP  
of Wells Fargo Advisors



# THANK YOU NRLT Members and Supporters!

The Northcoast Regional Land Trust is forever grateful to the following who gave grants, gifts or support from April 1, 2012 through March 31, 2013.

*The Northcoast Regional Land Trust is a tax-exempt, nonprofit, 501(c)(3) organization listed with the Internal Revenue Service under EIN #68-0456290. All donations are tax deductible.*

## Agencies & Foundations

Audubon/Toyota; TogetherGreen  
CA Department of Fish and Game  
CALFIRE  
California Conservation Corps  
CA Northern Region Land Trust Council  
CA State Coastal Conservancy  
CA Wildlife Conservation Board  
Community Alliance for Family Farmers  
County of Humboldt  
Dean Witter Foundation  
Friends of the Dunes  
Humboldt Bay Recreation Enhancement & Water Quality Fund, Humboldt Area Foundation  
James Talcott Fund  
Land Trust Alliance  
Natural Resource Conservation Service  
NOAA Fisheries  
Norcross Wildlife Foundation, Inc.  
Pacific Coast Joint Venture  
RCAA Natural Resources Services  
Redwood Region Audubon Society  
S. D. Bechtel, Jr. Foundation  
The Nature Conservancy  
Umpqua Bank  
U.S. Bank  
U.S. Fish & Wildlife Service  
U.S. Forest Service, Forest Legacy Program  
Yager/Van Duzen Environmental Stewards

## Active Lifetime Members

*A special thanks to these members who have continued to sustain NRLT. See a full list of Lifetime Members at: [nrlt.org/partners](http://nrlt.org/partners).*

Blake & Stephanie Alexandre  
Gary & Lynn Baker  
Gloria Barnwell  
Les & Janet Barnwell  
Barbara Barratt  
Bob Battagin & Deborah Fitzpatrick  
Schorr Berman  
Joan Berman  
Harry Blumenthal & Scott Mitchell  
Bill Bragg & Lee Roscoe-Bragg  
Ross Burgess  
Francis & Carole Carrington  
Maya Conrad  
Renee Crowley  
Yvonne Everett  
Betsy Filippini  
Shayne & Lindsay Green  
Jill & Steve Hackett  
Richard & Nancy Head  
Judith Hinman  
Annette & Greg Holland  
Ann King Smith  
Roland Lamberson & Michele Olsen  
Tom Lisle & Lori Dengler  
David & Madeline McMurray  
Steve Miller & Yvonne Schell  
Lee & Eileen Mora  
Fred Neighbor & Joyce Hough Neighbor  
Margaret Nulsen & Chris Frolicking  
Felicia Oldfather  
Rob Parks  
Tim & Jackie Pricer  
Dennis Rael & Carol Falkenthal  
Emily Rowe  
Jeff & Edith Schwartz  
Martha Ann Spencer & Eric Nelson  
Francis Sweet  
Bill & June Thompson  
Ronald & Donna Thompson  
John & Nancy VanSpeybroeck  
Marty & Dan Vega  
Mock Wahlund  
George Yandell

## Steward's Circle

*A special thanks our monthly donors. To sign up go to: [nrlt.org/Stewardscircle](http://nrlt.org/Stewardscircle).*

Heidi & Bill Bourne  
Bill Bragg & Lee Roscoe-Bragg  
Laura & Bob Chapman  
Maya Conrad  
Gail Coonen  
Renee Crowley  
Andy & Dawn Elsbree  
Emerald City Laundry Company  
Rees Hughes & Amy Uyeke  
Ann King Smith  
David & Madeline McMurray  
Susan Moskaly  
Martha Ann Spencer & Eric Nelson

## Big Leaf Maple (\$500-\$999)

Anonymous (3)  
Tom & Nancy Bessette  
Greg Blomstrom  
Mike & Annette Downey  
Ellen Fred  
Aaron Newman

## Black Oak (\$250-\$499)

Anonymous (3)  
Hezekiah Allen  
Christine Barkdull & Richard Jackson  
Heidi & Bill Bourne  
Brian Ferguson & Berit Meyer  
Willard Foote & Jan Werren  
Debra & Joe Frazier  
Gary & Janis Friedrichsen  
Danny Hagans  
Dennis & Sherry Hazelton  
Dana & Dean Hunt  
Mike & Cindy Jeffress  
Harvey Kelsey & Susan Cashman  
Lee & Nancy Leer  
Ken Magnuson & Barbara Morrison  
Susan & Gerald Marshall  
Jim & Gay Morrison  
Denise Newman & Mitch Block  
Sean & Kathy O'Day  
Jerry & Gisela Rohde  
Hugh Scanlon & Sharon Levy  
Jens & Claire Sund  
Larry & Cheryl Zuber

## Madrone (\$100-\$249)

Anonymous (6)  
Celestine B. Armenta  
Randy Brown & Sandra Paris  
William & Carol Brueske  
Carolyn Bugenig  
Greg Bundros & Teri Huber-Bundros  
Charlie Butterworth  
Marylee Bytheriver & Allan Katz  
Xiaozhen Chen  
Clif Clendenden  
Nancy Correll & Richard Duning  
Clara & Curtis Cross  
Diane C. DeFord  
James Derden & Judith Little  
Stan & Judy Dixon  
Joan Early  
Jud Ellinwood & Anda Webb  
Marjorie Fay  
Susan Frances & Ken Yanosko  
Corrine Frugoni  
Julie Fulkerson & Lynn Evans  
Don & Sylvia Garlick  
Jill Hackett  
James Haldeman  
Lisa K. Hansen

Dick Hansis  
Chris & Sheila Hepp  
Thomas Hofweber  
Tyler Holmes  
Lisa Hoover  
Rees Hughes & Amy Uyeke  
Scott & Sandi Hunt  
Alyson Hunter  
Bill & Lynda Hutton  
Eric Jansson  
Melanie Kasek & Edge Gerring  
Roz Keller & Andy Aranco  
Bill Kier  
Melissa & Todd Kraemer  
Richard LaForge  
Kim & Barbara Lucas  
Mandy & Mark Marquez  
Chris McAuliffe  
Marilyn Miles  
Mike & Rene Miles  
John & Jean Montgomery  
Rusty & Alverna Moore  
Wes Moore & Leslie Cottrell Moore  
Ben & Ananda Morehead  
Frederick & Katherine Morehouse  
Archie & Sue Mossman  
Cynthia & Earl Noel  
Skyhawk & George Ojala  
Colleen O'Sullivan & John Veevaert  
Janice Parakilas & Roy Baker  
Claire & Gene Perricelli  
Sarah & Corin Pilkington  
Gary Ryncerson  
Conor & Rachel Shea  
Darci Short & Frank Bickner  
Larry & Becky Simpson  
Bob Sizoo & Sue Turner  
Rondal Snodgrass  
Eryn Snodgrass  
Dona Templeman  
Ted & Josephine Trichilo  
Mike Wallace  
James & Virginia Waters  
Lia Webb  
Jana & Lynn Wilkins  
Malcolm & Marcia Witter  
Paul & Amber Woodworth  
Gretchen Ziegler

## Manzanita (up to \$99)

*We graciously thank our donors that gave up to \$99. For a full list visit: [nrlt.org/partners](http://nrlt.org/partners).*

## In-Kind Donations

*Does not include Annual Celebration donors.*  
American AgCredit  
Bug Press  
Centerville Farms  
GHD (formerly Winzler and Kelly)  
Law Offices of Nancy Diamond  
Leslie Scopes Anderson  
Los Bagels  
Northcoast Cleaning Services, Inc.  
Shotz Coffee

## In Memory Of

*Lisle & Margaret Baldwin:* Kenneth Baldwin  
*Tom Brundage:* Marylee Bytheriver & Allan Katz, Diane C. DeFord  
*Christian DesMarets:* Diane DesMarets & David Price  
*Juanita Franklin:* Dennis & Sherry Hazelton  
*Brian Hunt:* Scott & Sandi Hunt

## Our Business Partners

**Make our community strong. Please support the following businesses:**

*Does not include Annual Celebration donors.*  
A.M. Baird Engineering & Surveying  
Aldaron Laird Consulting  
Alexandre Family EcoDairy Farms  
Almquist Lumber Company  
American AgCredit  
Anderson, Lucas, Somerville & Borges, LLP  
Arcata Scoop  
Arcata Scrap & Salvage  
Azure Bay Psychotherapy  
B & B Portable Toilets  
Brooks Appraisal Service  
Bug Press  
Cafe Brio  
Charlie Tripodi, Coldwell Banker Cutten Realty  
Chris Bell Appraisal Associates  
Clendenden's Cider Works  
Cypress Grove Chevre, Inc.  
Deep Seeded Community Farm  
Douglas Parkinson & Associates  
Ellen A. Fred, Attorney at Law  
Emerald City Laundry Company  
Ferndale Farms  
Fortuna Optometry  
Green Diamond Resource Company  
Greenway  
Hec Wood, Edward Jones  
Hesse, Green, Piland & Corsetti  
Hohman & Associates Forestry Consultants  
Hooven & Co., Inc.  
Humboats Kayak Adventures  
Humboldt Association of Realtors  
Humboldt Auction Yard/Humboldt Grassfed Beef  
Hunter, Hunter & Hunt  
Hussey Financial Consulting Group, Wells Fargo Advisors  
Jamie Walling, CPA & Associates  
Jason M. Garlick, Attorney at Law  
Larry Parker, Benchmark Realty Group  
La Trattoria  
Law Office of Catherine M. Koshkin  
Law Offices of Nancy Diamond  
Lisa Hansen, CLPF, NCG  
Los Bagels  
Maya Conrad, Realtor, EcoBroker, Coldwell Banker Sellers Realty  
Mock Wahlund, Coldwell Banker Cutten Realty  
North Coast Cleaning Services, Inc.  
Northcoast Horticultural Supply  
Precision Intermedia  
Redwood Curtain Brewing Company  
Redwood Roots Farm  
Renata's Creperie  
Riverbar Farm  
Shakefork Community Farm  
Shotz Coffee Solutions  
The Historic Requa Inn  
Tomas Jewelry  
Umpqua Bank  
U.S. Bank  
Victoria Copeland, Ming Tree Realtors  
Wildberries Marketplace  
Zwerdling, Bragg & Mainzer, LLP

*Tim McKay:* Richard & Phyllis Stanewick  
*Randy W. Moore:* Rusty & Alverna Moore  
*Tom Rowe:* Jana & Lynn Wilkins  
*Their partners:* Malcolm and Marcia Witter

## In Honor Of

*Celestine Armenta:* Bonnie Auerbach & Anne Hapgood  
*Ray Cline:* Bill & Gnesa Kirchman  
*Mike Depew:* Arnold King  
*Grandpa, man of the land:* Lia Webb  
*Grizzly Creek Land & Cattle:* Sean & Kathy O'Day  
*Letitia Jensen:* Kim Korobi  
*Ann King Smith & Greg Blomstrom:* Corrine Frugoni  
*Wallace & Velma Willett:* Walter & Phyllis Werren, Willard & Jan Foote

**Edward Jones**  
MAKING SENSE OF INVESTING

**Hooven & Co., Inc.**



**CAT KOSHKIN**  
Attorney & Counselor  
of Law



**Bug Press**  
COMMERCIAL PRINTING  
DESIGN  
TYPESETTING

**HG PC HESSE, GREEN, PILAND & CORSETTI**  
AN ACCOUNTANCY CORPORATION  
CERTIFIED PUBLIC ACCOUNTANTS



**NORTHCOAST REGIONAL LAND TRUST**  
 P.O. Box 398  
 Bayside, CA 95524

RETURN SERVICE REQUESTED

NONPROFIT ORG  
 US POSTAGE  
 PAID  
 Eureka, CA  
 Permit No. 46

## CALENDAR OF EVENTS

**Logger Bar Fundraiser: *Thur., May 30, 6:00 pm, Blue Lake***  
 Come honor the land and its stewards at the historic Logger Bar in Blue Lake. Live music and food.

**Freshwater Farms Interpretive Walks: *TBD Jul., Aug., Oct.***  
 Experience, firsthand, beautiful tidal salt marsh and pastureland at the Land Trust's restoration of wetland on the 74-acre Freshwater Farms Reserve. Each walk features a guest speaker.

**Canoe-the-Slough: *Jun. 15 (Sunset Paddle) and Sept. 7 (Autumn Paddle)***  
 Paddle Humboldt Bay and the Freshwater Slough with a NRLT naturalist. Learn about the Bay's natural environment and the changes it has seen throughout the decades.

**Pints for Non-Profits: *Wed., Aug. 21, 1:00 to 9:00 pm, Mad River Brewing Company***  
 Join NRLT board members, advisors, staff and supporters in Blue Lake to celebrate conservation. \$1 of each beer sale goes to NRLT. Live music and food.

**Annual Celebration: *Sat., Oct. 12, Fortuna River Lodge***  
 Celebrate NRLT's work in the community at our annual gathering. A delicious meal, live auction and other entertainment will be included in the festivities.

**Lay of the Land: *Second Thur., 4:00 to 5:00 pm, NRLT Office***  
 Join the Land Trust for the *Lay of the Land*, a one-hour presentation that gives an overview of what we are doing to protect and enhance our region's farms, forests, rangelands and natural areas.

*Special thanks to these sponsors for underwriting this issue:*



## COVER ARTIST— MADELINE MCMURRAY

Therapist, artist, writer, seminar leader and guest lecturer, Madeline McMurray has lived and worked in Humboldt County for over thirty years. As a licensed Marriage and Family Therapist, she works from the perspective of Archetypal Psychology and much of her art reflects this outlook. For Madeline there is a mythic quality in the creative process no matter the subject or the medium. Madeline is a painter and a mask maker as well as an author of two books, *Beyond Heroics: Living Our Myths and Illumination: Art as Healer*. Madeline is the wife of NRLT co-founder and advisor, David McMurray.



*Freshwater No. 1*

**Leave a Legacy** There are a number of ways that you can help ensure this beautiful landscape and our unique way of life is conserved forever. The Land Trust can be remembered in wills or living trusts through cash or property bequests. Go to [www.ncrlt.org/leavealegacy](http://www.ncrlt.org/leavealegacy) or call 822-2242 for more information.

Also thanks to:

