

SPRING 2026



NORTHCOAST REGIONAL LAND TRUST



Arcata Bottoms

Hayden Ryan

Working Together to Advance Conservation: A Message from the Executive Director

For more than two decades, the Northcoast Regional Land Trust (NRLT) has worked alongside landowners, agencies, and community members to protect the wild and working landscapes that define northwestern California.

Through voluntary conservation easements and collaborative stewardship, NRLT has conserved over 81,000 acres of forests, farms, ranchlands, and wetlands that sustain our communities and wildlife alike. This work is made possible thanks to your support!

Today, we find ourselves at an important moment. Across our region, landowners continue to come forward with opportunities to conserve and steward special places. These projects protect wildlife habitat, maintain productive agricultural lands, and safeguard waterways that our communities

rely on. Each project is built through years of trust, planning, and partnership, and requires significant investment from our community of supporters through every stage of development.

Among the more than a dozen projects currently in progress are:

- **Black Dog Woodlands CE** (onboarded in 2024) – Thanks to partners, community support, and a recent grant from the California Natural Resources Agency, this project will protect 554 acres of working forest and rangeland in Kneeland, including ecologically and culturally important oak woodlands and a salmon-bearing tributary to the Mad River (Baduwat). This property will also be home to Sacred Groves, Humboldt County’s first conservation burial grounds. Read more from the landowners’ perspective on page 5.

IN THIS ISSUE

From the Executive Director	2
Travis Ranch Conserved	3
Lindsay Creek Conservation	4
Landowner Lens	5
Wood Creek Restoration	5
Annual Report	6
NRLT Supporters	7
Calendar of Events	8
Featured Artist	8

Continued on page 2

Board of Directors

President, Martha Spencer, Retired
Land Use Planner

1st Vice President, Christine Manhart,
Engineering Geologist, State Water
Resources Control Board

2nd Vice President, Susan Moranda,
Senior Tax Manager, DHS Advisors

Secretary, Karen Diemer, Retired City
Manager

Treasurer, Joseph Alexandre, Dairy
Manager, Alexandre Family Farm

Julia Cavalli, Wildfire Resilience Planner,
Dudek

Bryn Coriell, Broker/Owner, Coldwell
Banker Sellers Realty

Nancy Diamond, Attorney, Law Offices of
Nancy Diamond

Russell Dorvall, Timber/Log Procurement
Mngr., North Fork Lumber Co.

Domingo Escamilla, Registered Profession-
al Forester, Humboldt/Mendocino Red-
wood Company, LLC

Alyson Hunter, Retired Land Use Planner

Todd Fulton, Rancher, Land Security,
Green Diamond Resource Co.

Erin Kelly, Forestry Professor, California
Polytechnic University Humboldt

Mike Wallace, Retired Fisheries Biologist

Board of Advisors

Blake Alexandre

Mark Andre

Greg Blomstrom

Heidi Bourne

Clif Clendenen

Maya Conrad

Melanie Cunningham

Jeff Dunk

Yvonne Everett

Gary Falxa

Gary Flosi

Annette Holland

Rees Hughes

Dave Imper

Pete Jackson

Peter Jermyn

Ann King Smith

Aldaron Laird

Roland Lamberson

Mandy Marquez

David McMurray

Dina Moore

Leland Mora

Chuck Powell

Dennis Rael

Rondal Snodgrass

David Turner

Robert Vogt

Staff

Dan Ehresman, Executive Director

Beth Bray, Operations Director

Zach Wenderott, Project Manager II

Nadia Van Lynn, Outreach & Development
Director

Riley Martel-Phillips, Admin &
Community Engagement Manager

Connor McGuigan, Project Manager

Kate Gazzo, Project Manager

Leslie Scopes Anderson, Newsletter Volunteer

Newsletter published by NRLT twice a year

P.O. Box 398, Bayside, CA 95524

Phone: 707.822.2242

info@nrlt.org; www.nrlt.org

A Message from the Executive Director

Continued from page 1

• **Trinity Timberlands** (onboarded in 2018) – In collaboration with project partners, NRLT is working to protect 12,000+ acres of forestland on South Fork Mountain with a unique approach that will result in both a completed conservation easement as well as fee title acquisition with the vision to transfer the conserved property to The Watershed Research & Training Center, a Trinity County-based conservation organization, in collaboration with the Nor-Rel-Muk Wintu Nation. This project will protect the largest private inholding in Shasta-Trinity National Forest and bring multi-generation stewardship back to this irreplaceable landscape.

With conservation easement funding secured thanks to the federal Forest Legacy Program in collaboration with CAL FIRE, we are moving to completion of the conservation easement while simultaneously fundraising for the fee acquisition – and solidifying perpetual stewardship as a community forest. NRLT is grateful to work alongside current landowners and future stewards of this exciting multi-partner project.

• And the **Cottrell Ranch CE** (onboarded in 2023), and **Kinsey Ranch CE** (onboarded in 2021) – both are unique, agricultural properties with deep family ties to the land. Stay tuned – we expect to complete both projects this year and will be talking more about them soon.

Each of these projects reflects a shared commitment to stewarding the lands that make our region unique. They also demonstrate something we see time and again: lasting conservation happens when diverse partners come together around shared values.

At the same time, the funding landscape that supports conservation continues to evolve. Shifts in federal and state priorities, broader economic conditions, and growing demands on conservation organizations all mean that completing projects increasingly

requires support from many different sources.

That is why NRLT continues to strengthen partnerships across its broad community of supporters.

Public agencies, private foundations, local businesses, landowners, and individuals each bring important perspectives and resources to this work. Together, these partnerships make possible conservation projects that no single source of support could achieve alone.

Looking ahead, your continued support is crucial to ensure that these current projects – and future conservation opportunities – can be successfully completed. Your support also advances restoration projects like Wood Creek Phase III, stewardship of Freshwater Farms Reserve, and education and outreach programs which engage more people in wild and working land conservation. As NRLT grows to meet this moment, we know that we will need to be more creative in our approach and it is only through the strength of our partnerships that we will be able to continue advancing impactful conservation successes into the future.

We remain deeply grateful to all of you who stand behind this work. Conservation is, and always has been, a collective effort. By continuing to work together, we can protect the landscapes that define our region and sustain the people and wildlife who depend on them.

Thank you!



Dan Ehresman, Executive Director



Board Transitions at NRLT

Earlier this year, we said thank you to Tom Hjerpe, Peter Jermyn, and Bob Vogt as they transitioned off the Board of Directors, each after they reached their term limits serving three consecutive three-year terms. Please join us in thanking them for their service, and in welcoming returning Board member, Alyson Hunter, and new Board member, Bryn Coriell! You can learn more about them and other Board members at nrlt.org/about/board-of-directors.



Alyson Hunter and Bryn Coriell

A Community Vision, Realized in the Protection of Lindsay Creek

The completion of the 2,815-acre Lindsay Creek Conservation Easement marks a major milestone for the McKinleyville and Fieldbrook communities – it is the result of a community vision that has been decades in the making and reflects years of collaboration.

Long before the easement was finalized, residents were thinking about the future of the forested greenbelt separating McKinleyville and Fieldbrook. In the mid-1990s, proposals emerged to rezone timberlands for residential development. Many people were wary of national trends of sprawling development and converted agricultural and timber lands. In a rural region with a resource-based economy, this seemed short-sighted and detrimental to livelihoods that had been cultivated here. Additionally, residents knew that fracturing this greenway would irreversibly alter the scenic character of both communities while damaging important habitat for fish and wildlife.



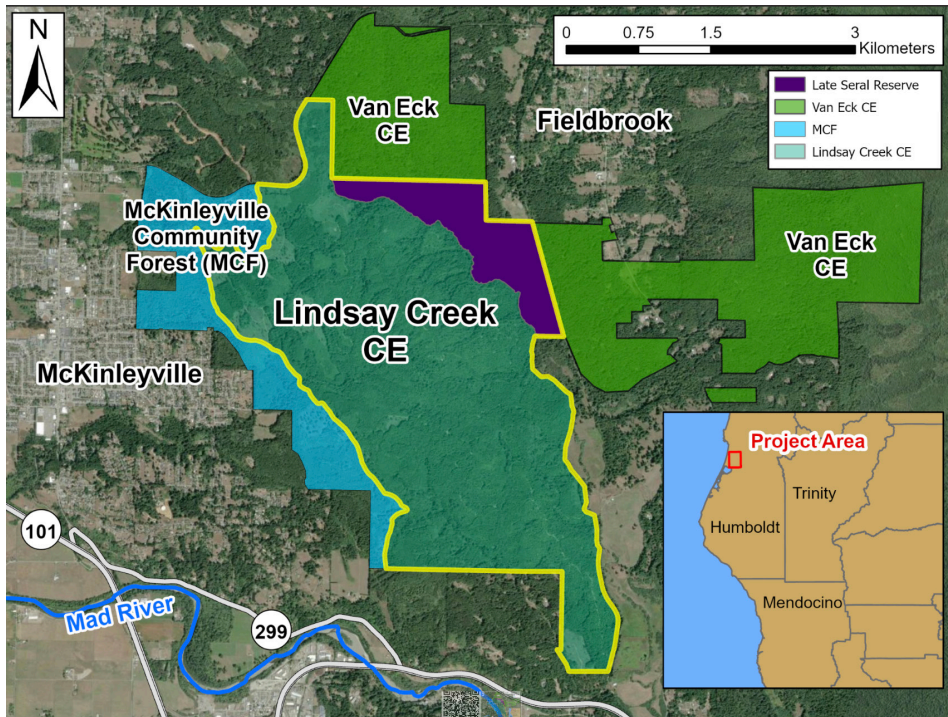
The conversations continued for years, through community planning processes, public meetings, and collaboration among local groups, agencies, and landowners. From these efforts emerged a path that would protect the area's working forests, open space, and rural character. The

overarching goal was to protect the entire greenbelt, while paying attention to the individual needs and values of each property.

The Lindsay Creek property, owned and managed by Green Diamond Resource Company, sits within this broader conservation corridor that includes the McKinleyville Community Forest and Van Eck Conservation Easement (held by Pacific Forest Trust). It was the missing piece – and highlights the important role of private conservation in protecting continuous landscapes. The Lindsay Creek Conservation Easement prevents subdivision and development on the property, while keeping the land in private ownership for continued timber management.

Lindsay Creek itself is a remarkable salmon-bearing tributary to the Mad River (Baduwa'), and the surrounding lands are home to other sensitive native species, including the northern spotted owl and giant pacific salamander. Amidst considerable development pressure, keeping these forestlands intact permanently protects these habitats, as well as water resources, local jobs, and the rural character of the region.

The completion of this conservation easement reflects the strength of partnership, bringing together timberland owners, the McKinleyville Community Services District, the Trust for Public Land, CAL FIRE, residents, and more. Most of all, it reflects the persistence of a community. After decades of collaboration, a shared vision for this landscape is now permanently protected.



A 300-acre Late Seral Reserve will be managed to protect older forest habitat, enhance connectivity with the Van Eck Conservation Easement, and protect critical salmon-bearing waterways. Meanwhile, other forestlands of the Lindsay Creek Conservation Easement will continue to contribute to the local timber economy.

NRLT's Mission: *The Northcoast Regional Land Trust is committed to conserving northwestern California's wild and working landscapes through voluntary partnerships that promote stewardship, sustain local economies, and protect land for its natural, educational, scenic, and historic values.*

Learn more about the Lindsay Creek Conservation Easement project and its partners at nrlt.org/press-release-lindsay-creek-conservation-easement-completed or by scanning the QR code. ➔



Travis Ranch Conserved: Keeping a Working Landscape Whole

Earlier this year, the Travis Ranch Conservation Easement permanently protected nearly 12,000 acres of forests, rangelands, and waterways in southwestern Trinity County. It also ensures that a way of life rooted in the land can continue for generations to come.

For rancher Dan Albee, his connection to the land runs deep. His family has been working the ranch since the 1970s, and he began full-time ranch work alongside his father at 19. Decades later, he's still there carrying that work forward, sometimes bringing his own kids into the family business.

Dan manages a cow-calf operation that spans multiple properties and public land grazing allotments, with Travis Ranch at its center. The work follows the rhythm of the seasons – spring branding, summer range, fall gathers across tens of thousands of acres, and wintering cattle back on the ranch. Much of it is still done on horseback, with trained dogs, in much the same way it has been for generations.

“I’ve been around it my whole life,” Dan said. “It’s a really unique place.” This connection is part of what makes the conservation of Travis Ranch so meaningful.

The easement keeps the ranch intact, preventing subdivision and maintaining the land for ranching, forestry, and wildlife. It also protects an ecologically significant landscape. Travis Ranch connects a network of surrounding public lands spanning more than 200,000 acres, providing habitat for species like the northern spotted owl and summer steelhead, and supporting over 30 miles of streams in the North Fork Eel River watershed.

At the same time, the ranch continues to sustain a working economy, supporting jobs



Growth and recovery continues on the ranch since the August Complex fire burned much of its forests and rangelands in 2020.

tied to cattle, timber, and seasonal hunting in a region built on land-based livelihoods.

For Dan, the future of the ranch is simple: “I just hope it stays in production,” he said. “I want to see it heal... and I want to see the wildlife thrive.”

“ *I think it’s a really special place... that needs to remain a large tract of land.* ”
– Dan Albee, rancher

With the conservation easement now in place, that future is far more certain. Travis Ranch will remain a working landscape and connected habitat for generations to come. Dan’s son plans to return to the family ranch this year, after graduating from

Chico State University. Working alongside his father, he will be continuing the legacy of family stewardship that now spans four generations.

Projects like this are only possible through strong partnerships, shared vision, and the support of people who care about the future of wild and working lands in our region. Thank you for being part of these efforts.

The Travis Ranch Conservation Easement is held by CAL FIRE, with funding provided by the Wildlife Conservation Board and the USDA Forest Service’s Forest Legacy Program. NRLT worked with the landowner and agency partners to design an easement that balances conservation, stewardship and continued working land use. NRLT will serve as the monitoring agent, ensuring the long-term protection of the ranch’s conservation values.



More than 30 miles of streams support summer steelhead population and watershed health for the North Fork Eel River.



Projects like this depend on people coming together across time and place. This photo from 2019 shows an early site visit to the property, with ranchers Dan and David Albee, and partners from CAL FIRE and the Wildlife Conservation Board. David Albee passed away last summer, and we carry his memory with us in the completion of this project.

Landowner Lens: Eric Almquist

I've always been drawn to the land. Beautiful, rugged landscapes are part of what brought me to Humboldt in the first place. I didn't set out to become a landowner right away. I built my business (Almquist Lumber) from the ground up – starting with a pickup truck, hauling lumber and odds 'n ends, finding value where others didn't see it. Over time, that work grew into something stable and gave me the opportunity to invest in land.

When I first saw what's now Black Dog Woodlands, I knew it was special – the meadows, the oak woodlands, the forest. It felt like a place worth protecting.

It had been split into several parcels, and over the years, Mary and I picked up neighboring pieces as they became available. It wasn't a grand plan at first, but it became one. We realized we were trying to put the original ranch back together.

Taking care of this land is hands-on work. Clearing blowdown, managing fuels, cutting

firewood, maintaining the fields – it keeps me busy. And it keeps me connected. I've always felt that being a steward doesn't mean taking everything you can from the land. It means taking care of it.

When I heard that NRLT was awarded the grant for a conservation easement on the property, I was just thrilled. It makes long-term stewardship possible. I'm grateful to know that others see immense value in this land, for wildlife, for open space, and for sustaining our communities. I'm excited to see it put back together and protected, so that it will remain whole, viable, and beautiful for generations to come.

Eric & Mary Almquist own and steward the Black Dog Woodlands, a 554-acre working forest and agricultural property in Kneeland. NRLT was recently awarded a grant from the California Natural Resources Agency's Environmental Enhancement and Mitigation Program to help conserve this



property and its important role in regional habitat connectivity. Projects like this are made possible through a combination of public funding and the ongoing support of our community. You can read the full funding announcement at nrlt.org/press-release-state-funds-black-dog-woodlands-protection or by scanning the QR code. ➔



Wood Creek Restoration Continues with the Help of Volunteers

We were excited to learn that 169 uniquely tagged salmonids have already been detected in the Wood Creek Phase III restoration area in the past year – and we aren't even done yet! More earthworks will be taking place this summer on the Felt Ranch, but in the meantime, volunteers have already been out in the mud tending to native plants, tackling invasives, and supporting erosion control.



The first Humboldt Trails Council work day of the year was a huge success! Volunteer Trail Stewards and athletes from the Cal Poly Humboldt Women's Volleyball team treated invasive allium patches on the property, and supported plantings in the Wood Creek restoration area at Freshwater Farms Reserve.



Volunteers help with revegetation at the Felt Ranch during a volunteer event with the Watershed Stewards Program in February. More than 75 people came out to support these efforts!



More than 50 volunteers came out to support stewardship at Freshwater Farms Reserve as part of CalPoly Humboldt's annual MLK Day of Service this January.

NRLT is excited to engage more people in this multi-phase wetland restoration project through field trips, tours, talks, and monthly stewardship work days! Get your hands on the land:

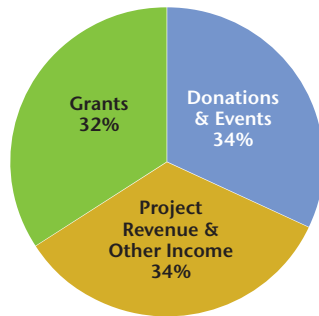
- **May 30** – The 2026 Humboldt Trails Summit includes an optional field trip to Freshwater Farms Reserve, 1pm. Registration required. Info at humtrails.org.
- **June 21 / July 19 / Aug. 16 / Sept. 20 / Oct. 18** – Join NRLT and the Humboldt Trails Council 9am to Noon on the third Sunday of every month as we work together to improve trail conditions and support restoration efforts at Freshwater Farms Reserve!
- **Fall Date TBD** – NRLT looks forward to hosting another public presentation and tour with project partners this fall! Stay tuned for more info coming soon.

ANNUAL REPORT 2025

INCOME

OPERATIONAL INCOME

Grants	\$269,500
Donations & Events	292,724
Project Revenue & Other Income	294,222
TOTAL OPERATIONAL INCOME	\$856,446



OTHER INCOME (excluded from graph)

Restoration Grant Passthrough ¹	\$1,287,245
Stewardship Contribution ²	176,100
Capacity Contribution ³	100,000
Realized/Unrealized Gains ⁴	374,042
TOTAL OTHER INCOME	\$1,937,387

¹ In 2025, NRTL administered grant funds for a large-scale restoration project, Wood Creek Phase III. These funds were passed directly to contractors and partners and do not represent discretionary funds available for operations.

² Stewardship Contributions are made upon the completion of conservation easement projects. These donor-restricted funds are held in an investment fund that will support the perpetual monitoring and stewardship of each completed conservation easement.

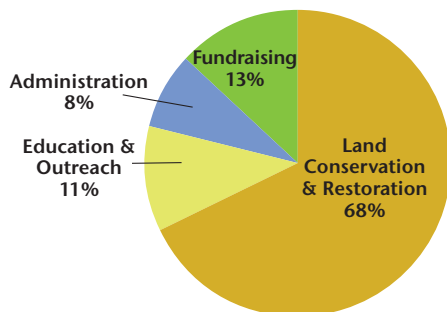
³ Capacity Contributions are made upon the completion of conservation easement projects. These board designated funds are strategically invested to support priority conservation activities and organizational development.

⁴ Realized/Unrealized Gains were primarily interest earned from donor-restricted stewardship contributions that are placed in an investment fund, allowing for the ongoing monitoring and stewardship of conservation easements.

EXPENSES

OPERATIONAL EXPENSES

Land Conservation & Restoration	\$545,569
Education & Outreach	89,403
Administration	63,035
Fundraising	104,443
TOTAL OPERATIONAL EXPENSES	\$802,450



OTHER EXPENSES (excluded from graph)

Restoration Grant Passthrough ¹	\$1,286,279
--	-------------

ACHIEVEMENTS

The Northcoast Regional Land Trust proudly marked our 25th year of wild and working land conservation with celebratory events and more opportunities to connect with the people and lands that make our organization so special. This work is not possible without the partnership of so many individuals, project partners, landowners, and other supporters like you.

Together in 2025 we:

- Completed the **Lindsay Creek Conservation Easement**, a 2,815-acre working forest and greenbelt between the communities of McKinleyville and Fieldbrook. Thanks to partners at Green Diamond Resource Company, CAL FIRE, and many more, the easement ensures that the property will remain a productive forestland and conservation corridor (read more on page 3).
- Broke ground on the **Wood Creek Phase III restoration project** at Freshwater Farms Reserve and the Felt Ranch. Building on more than a decade of work and partnerships, including the support of landowners Sean and Kathy O'Day and many others, this project restores tidal connectivity, improves salmon habitat, and alleviates flooding on agricultural lands. Work will continue through 2027.
- Continued work on **more than a dozen conservation easement projects**, spanning over 50,000 acres in Humboldt and Trinity Counties.
- Oversaw **monitoring and stewardship** of conservation easements comprising over 65,000 acres of rangeland, forests, and other diverse habitats.
- Completed a **25th Anniversary short film** featuring several landowner partners, thanks to support from the CA Dept. of Conservation. The video is available on our YouTube channel @northcoastregionallandtrust.
- Hosted **25 events** attended by over 1,300 people, primarily at our ambassador property, Freshwater Farms Reserve, which continues to be an important place for people of all ages to connect with wild and working lands.
- Taught over **400 students** about the compatibility of wildlife habitat and agriculture through hands on field trips and classroom visits.
- Continued our popular friend and fundraising events, including the **Summer Celebration** with Huckleberry Flint, the **Annual Celebration Dinner and Auction**, and the **Open Office Holiday Party** to close out a fantastic 25th anniversary year!

DONORS 2025

Thank You NRTL Supporters! We are grateful to the following who gave grants, donations, or support in 2025.

Agencies & Foundations

Americorps Watershed Stewards Program
 Association for Environmental and Outdoor Education
 The Buckeye Conservancy
 CA Coastal Commission
 CA Conservation Corps
 CA Department of Conservation
 CA Department of Fish & Wildlife
 CAL FIRE
 CA Forest Legacy Program
 CA Native Plant Society - North Coast Chapter
 CA Natural Resources Agency
 CA State Coastal Conservancy

CA Wildlife Conservation Board
 Cal Poly Humboldt
 College of the Redwoods
 County of Humboldt
 Friends of the Dunes
 Godwit Days
 Humboldt Area Foundation + Wild Rivers Community Foundation
 Humboldt Botanical Garden
 Humboldt County Cattlewomen
 Humboldt County Office of Education
 Humboldt Homebrewers
 Humboldt Roller Derby
 Humboldt Sponsors

DONORS 2025

Humboldt Trails Council
Land Trust Alliance
Latino Outdoors
Lost Coast Pride
Maxwell/Hanrahan Foundation
McLean Foundation
Natural Resource Conservation Service
NOAA Fisheries
North Coast Growers Association
Northern Region Council of Land Trusts
Redwood Community Action Agency (RCAA)
UC Cooperative Extension
US Fish & Wildlife Service
USFS Forest Legacy Program
Youth Educational Services Humboldt (YES)

Businesses

Does not include auction item donors.
A.M. Baird Engineering & Surveying*
Aalfs, Evans & Company, LLP*
Abbay Technical Services*
Alexandre Family Farm*
Almquist Lumber Company*
American AgCredit*
Baldwin, Blomstrom, Wilkinson & Associates, Inc.
Booklegger*
Brenda Pease Bookkeeping
Buttermilk Floral
Clendenen's Cider Works*
Coast Central Credit Union
Coldwell Banker Cutten Realty*
Conservation Partners
DHS Advisors
Dick Taylor Craft Chocolate
Dorris & Daughters Inc.
Edward Jones - Hec Wood*
Foggy Bottoms Boys
Freshwater Family Farm
GHD, Inc.*
Goldenberg Film*
Green Diamond Resource Company
Harbers Insurance Agency Inc.*
Harper Motors*
Hjerpe Law, LLP
Humboldt Auction Yard, Inc.*
Humboldt Cider Company
Humboldt/Mendocino Redwood Companies*
Jason Garlick, Attorney at Law
Julian Berg Designs - Architecture & Planning*
Kelly-O'Hern Associates*
Kinetic Koffee
Klamath River Lodge*
LACO Associates*
Los Bagels
Los Giles
Lost Coast Brewery
Lost Coast Ranch and Old Growth Timbers*
Mathews, Kluck, Walsh & Wylke LLC*
Michael Love & Associates, Inc.
Mid City Motor World*
Mission Linen
Moonstone Crossing Winery
Nancy Diamond Law*
North Coast Co-op
North Fork Lumber Company*
NorthPoint Consulting
Omsberg & Preston*
Owens & Ross Attorneys at Law*
Pacific Earthscape*
Pacific Gas and Electric
Pacific Mindfulness
Paskenta Mad River Brewing
Pierson Building Center*
Planwest Partners
Points West Surveying Co.
Pure Water Spas*
Ramone's Bakery & Cafe
RE/MAX Humboldt Realty
Redwood Capital Bank*
Roy E. Corsetti, CPA*
Samara Restoration
S & R Miller, LLC*
Schmidbauer Lumber, Inc.*
Shakefork Community Farm
Stillwater Sciences
Thomas Gast and Associates
Trinity Associates

Valley Pacific Petroleum Services/Renner Petroleum*
Vollmar Natural Lands Consulting
*2025 Business Partner

Steward's Circle

Anonymous
Laura and Chris Albright
Eric and Mary Almquist
Eli Asarian
Barbara Barratt
Dana Boudreau
Heidi Bourne
Beth Bray and John Bennett
Carol Brueske
Julie Buchanan
Pam Cahill
Christine Champe
Laura and Bob Chapman
Jim and Donna Clark
Gail and Ethan Coonen
Renee Crowley
Jason and Bethany Cseh
Bill and Barbara Daniel
Nancy Dean
Marlene and Bruce Ehresman
Dan Ehresman
Jim Elferdink and Joy Hardin
Elizabeth Eschenbach
Yvonne Everett and Judee Mayer
Gary Fabra and Gayle Garman
Todd and Jeannie Fulton
Genia Garibaldi
Rees Hughes and Amy Uyeke
Alyson Hunter and Bill Richards
Betsy and George Husband
Cybelle Immitt and Todd Sobolik
Peter and Shawn Jackson
John and Debbie Kelly
Erin Kelly and Randy Terra
Mary Claire Kier and Michael F. Edwards
Ann King Smith
Diane Korsorver and Darius Brotman
Roland Lamberson and Michele Olsen
Christine and Gary Manhart
Sherry and Ray Manka
Tom McMurray
David and Madeline McMurray
Kerry McNamee
Anthony McQueeney
John and Kate Monahan
Susan Moranda
Susan Moskaly
Frank Onstine
Tim and Marylyn Paik-Nicely
Marv and Karen Pemberton
Dale Preston and Catherine Sennott
Max Rousselot
Roger Schroeder and Amalia Borja
Bob Sizoo and Sue Turner
Martha Spencer and Eric Nelson
Nancy Stevens and Nathan Harris
Maggie and Andy Stimson
Nadia and Caleb Van Lynn
Joe Wagenbrenner
Mike Wallace and Marie Granshaw
Sarah Wallace
Sarah West
John Woolley

Supporters

Does not include Summer Celebration tickets.
Anonymous
Joseph and Alexa Alexandre
Don Allan
Katy and Tom Allen
Jennifer and John Anderson
Mark Andre and Nancy Rehg
Leonel Arguello
Mary-Jane Ashton
Spencer Babcock
Gary and Lynn Baker
Sara and Mike Bank
Ron and Regina Barlow
Stefanie Barnwell
Brandon and Lauri Barnwell
Bob Battagin

Ryan and Tessa Baxter
Judy and John Bennett
Chris and Richard Beresford
Chris Beresford
Jackie Berg
Robert and Siv Berg
Joan Berman
John Bernstein and Jean Box
Clinton Betts
Dona and John Blakely
Greg Blomstrom and Debra Harrison
David Bray and Kathy Clark
Laura Bridy
Susan Buckley and Mark Farrar
Jesse and Joleen Buffington
Greg Bundros and Teri Huber-Bundros
Raymond and Randi Burke
Mary Burke
Ryan Burns and Valerie Schramm
Michelle Bushnell
Peter Bussman
Jack Carden
Peter Carlson
Francis and Carole Carrington
Rebecca and Gabe Cashman
Julia Cavalli and Eliot Claesen
Mark and Tammie Chapman
Michael and Jane Cipra
Minema Clark
Kathleen Clark
Patrick Cleary and Catherine Koshkin
Clif and Laurie Clendenen
Peter and Diane Cohan
Tom Conlon
Michael Conners
Maya Conrad
Carole and Eugene Conti, Jr.
Roxy Contreras
Nancy Correll and Richard Duning
James and Lori Cortez-Regan
Gloria Cottrell and Leslie Moore
David and Carol Crivelli
Ali and Brian Crowell
Laurel Dalstead
Justin Daulton
Ron and Joan Dawson
Kristina Devenport and Will Devenport
Nancy Diamond and David Hankin
Karen and Dan Diemer
Russell Dorvall
Michelle Dostal
Lisa Dugan
Julie and Robert East
Eric and Julianne Edmondson
Jud Ellinwood and Anda Webb
David and Patricia Epstein
Bob Felter
Sol Fernandez
Genell Fitch
Deborah Fitzpatrick
Gary and Jan Flosi
Victoria Foersterling
Heath and Brandie Ford
Susan Frances and Ken Yanosko
Amanda Freeman
Gary and Janis Friedrichsen
Nancy and Verne Frost
Corinne Frugoni
Kenneth and Jackie Fulgham
Julie Fulkerson and Lynn Evans
Tom and Jennifer Fulkerson
Margaret Gainer
Miles Garrett
R. Uwe and Zuzana Gellner
David Gibbs
Pat Girczyz and Steve Durham
Paula Golightly
Zuey and Brenda Goosby
Dennis and Jennifer Grandy
Lindsay and Shayne Green
Fran Greenleaf
Laure Grinnell
Judy and Pete Haggard
Brad Hale
Joni and Scott Hammond
Karen and Darren Hansen
Robin and Claire Hashem
Dan and Donna Hauser

Michael and Linda Hill
Judith Hinman
David Hitchcock and Danelle Merz
Bill and Colleen Hole
Annette and Greg Holland
Lisa Hoover
Martha Hunkins and Carman Gentile
Mary Hurley
Dave Imper and Colleen Haining
Jack and Peggy Irvine
Erik and Toni Jansson
Peter Jermyn and Claudia Paliaga
Robert and Mary Johnson
Zachary and Elizabeth Johnson
Phil Johnson
Laura Kadlecik and Mike Wilson
Harvey Kelsey and Susan Cashman
James T Kelsey, Jr.
Joyce King
Mel and Holly Krebs
Richard and Kathy LaForge
Aldaron Laird
Brian Lauter
Lee Leer and Nancy Dye
Joan Levy and Steve Salzman
Ann Lindsay and Alan Glaseroff
Thomas Lisle and Lori Dengler
Byrd Lochtie
Kristine Long and Jacques Gagne
Judith Longshore
Jason Lopiccio and Natalie Arroyo
Peggy Loudon
Kari and Mike Love
Kendra Lovitt
donna luckey
Mary Ann Madej
Lynn Marks and Tom Noll
Karen and David Mast
Claire McAdams
Chris McAuliffe
Kate McClain
Mark and Mary Ann McCulloch
Laura McEwen and Jim Falls
Maureen McGarry
Heidi McHugh
Jim and Terry McVicker
Tim Metz
Berit Meyer and Brian Ferguson
John Meyer and Carolyn Benson
Mike Miles and Renee Miles
Carol Mone
Dina and Mark Moore
Randall and Alverna Moore
Leland and Eileen Mora
Laura and Martin Morris
Jim and Gay Morrison
Daniel Moskaly
Stuart Moskowitz
Fred Neighbor and Joyce Hough
Sharon Nelson
Laurel Nelson and Drew Clendenen
Kyla and Daniel Nored
Margaret Nulsen
Sean and Kathy O'Day
Felicia Oldfather and Dave Bitts
Moises Ortiz
Charles and Elaine Ozanian
Bob Pagliuco and Shoshanna Raybin
Janice Parakilas and Roy Baker
Zhao Parks
Rachael Patton
Wayne Peabody
Claire and Gene Perricelli
Todd Phelps
Keenan and Arianne Pool
Tim and Jackie Pricer
Michael Pulley and Geneva Bottger
Jose Quezada
Dennis Rael and Carol Falkenthal
Carla Ragatz Osborn
CJ and Carol Ralph
Noah Ramsey
Bryan Randolph
Maura Rasmussen
Joshua Rice
Laurie Richmond and Colin Anderson
Diego Robles
Julie Rofman

Gina Rogers
Gary Rynearson and Andrea Poteet
Alan Sanborn and Lisa Petterson
Jean Santi
Jillian and Jared Santos
Kathy Sattler
Stock Schlueter
Carol Schmitt
Ed Schreiber
John Schwabe
Misha Schwarz
Tammy Rae Scott
Irith Shalmony
Mary Shanahan and Peter Blakemore
Emily Sinkhorn
Mark and Marty Sinkhorn
Wade and Cathy Sinnen
Jeannie and Steve Smalley
Doralee Smith
Renee Stanton
Julie Stark
Peter and Sara Starr
Howard and Rebecca Stauffer
Nancy Stevens and Nathan Harris
John Stokes
Tom Strobel
Karen Tarrte
Judy Tengbom and Alison Collins
Donna and Ronald Thompson
Leonard and Susan Thorsell
Gary Timek
David Turner
Andrea Tuttle
Farrah Tyler
Denise Vanden Bos and Peter Pennekamp
Steven and Carol Vander Meer
Maryellen Vander Sluis
John and Nancy VanSpeybroeck
Marta Vega
Mary Virnoche and Josh Meisel
Bob and Angela Vogt
Lucas and Marissa Vogt
Susan Vogt Butch
Nico Vollmar and Sarah Hasiuk
Eric and Sharon Vollmers
James and Sharyl Walker
Denise Walker-Brown and Justin Brown
Ernie Wasson
James and Virginia Waters
Judy Webb
Zach Wenderott and Allison Kenney
Tom and Jayme Weseloh
Andy and Sandy Westfall
Jennifer Wheeler and Jonathan Lynn
Bill and Janet Wickman
Ann and Lawrence Wieland
Jana and Lynn Wilkins
George Williamson
Jane and Paul Wilson
Malcolm and Marcia Witter
Skyler Wrigley
Zoe Ziegler
Cheryl Zuber

In Honor Of

Beth Bray: Judy and John Bennett
Ann King Smith: Corinne Frugoni
Claire Pericelli: Maryellen Vander Sluis
Skyler Wrigley: Nadia and Caleb Van Lynn
Kirby Bay, Sr.: John Woolley

In Memory Of

Gale Blomstrom and Greg Sorlie: Greg Blomstrom and Debra Harrison
Mike Berg: Robert and Siv Berg
Barry Collins: Judy Tengbom and Alison Collins
Kevin Ebbert: Erik and Toni Jansson
Arlin Grandy: Dennis and Jennifer Grandy
Susan and Robert Parks: Gary and Lynn Baker
Tom Rowe: Jana and Lynn Wilkins
Doug Smith: Bob Battagin
Charles Wilson Wagner: Karen Tarrte;
Carole and Eugene Conti, Jr.
Buzz Webb: Judy Webb



NORTHCOST REGIONAL LAND TRUST

PO Box 398 Bayside, CA 95524

Change Service Requested

NONPROFIT ORG
US POSTAGE
PAID
Eureka, CA
Permit No. 46



CALENDAR OF EVENTS

Annual Celebration - Boots and Birkenstocks: *Saturday, October 10, 5pm - 9 pm, Fortuna River Lodge (1800 Riverwalk Dr.).* Celebrate community and conservation at our annual gathering. Enjoy a locally produced dinner, open bar, music, and live and silent auctions. More information will be available at ncrlt.org/events.

Stewardship Days: Join us and the Humboldt Trails Council every third Sunday of the month through October to steward the trails at Freshwater Farms Reserve and support Wood Creek restoration. Safety equipment, tools, and coffee provided.
June 21 / July 19 / Aug. 16 / Sept. 20 / Oct. 18

You may notice the Summer Celebration is missing from our typical event list – we are taking a year off to focus on other conservation and growth priorities. Stay tuned at ncrlt.org, follow us on social media, or subscribe to our mailing list by emailing info@ncrlt.org.

Featured Artist – Hayden Ryan

Hayden Ryan is a plein air painter from Arcata, CA. Like many landscape painters, his art journey began with the simple yet profound observation of the lush and unique Humboldt landscape. From there, he developed an art practice centered on capturing an authentic feeling of kinship with the land. After a decade in Santa Cruz and a recent move to New York, Ryan has begun transposing his deep appreciation for coastal California into the historic woods and waterways of the Hudson Valley region. He would be honored to have you follow along as he continues this journey of creating kinship with the landscapes he now inhabits.



DeepSeeded Community Farm by Hayden Ryan

Thanks to our current business partners



American
AgCredit



Almquist Lumber Company; Baldwin, Blomstrom, Wilkinson & Associates; Coast Central Credit Union; Edward Jones – Hec Wood; Kelly-O’Hern Associates; Pierson Building Center; Redwood Capital Bank; Roy E. Corsetti, CPA
Learn more about our Business Partner Program at www.ncrlt.org/ways-to-give/business-partners.